



Growth  
from  
Knowledge

2024

**RADIO RATINGS  
TOOL KIT**

The 2024 Tool Kit provides all the information you require regarding the GfK radio ratings.

You can click on each link below to move straight to that section and select the GfK logo to return to this contents page.

- [Understanding the radio ratings](#)
- [The GfK radio team](#)
- [2024 radio survey schedule](#)
- [2024 radio reporting periods](#)
- [Survey area maps](#)
  - [Auckland](#)
  - [Wellington](#)
  - [Christchurch](#)
  - [Dunedin](#)
  - [Hawkes Bay](#)
  - [Manawatu](#)
  - [Nelson](#)
  - [Northland](#)
  - [Rotorua](#)
  - [Southland](#)
  - [Taranaki](#)
  - [Tauranga](#)
  - [Waikato](#)
- [Metropolitan population potentials](#)
- [Regional population potentials](#)
- [2024 radio ratings training calendar](#)
- [2024 lifestyle categories](#)
- [Radio ratings glossary](#)
- [Accessing and sourcing radio ratings](#)
- [How the ratings are collected](#)
- [Radio Broadcasters Association](#)

By future-proofing radio audience measurement with online electronic diaries (e-diaries) and the incorporation of new technology during recruitment, GfK is ensuring that all New Zealanders have an equal opportunity to participate in the radio ratings.

## Multi-mode survey methodology

To ensure all radio listeners continue to have a voice, we have created more ways of interacting with them:

- 70% recruited face-to-face, completing paper diaries
- 30% recruited online, completing e-diaries

The online recruitment allows for daily checking of sample quotas and compliance. E-diaries can be accessed on computers, tablet PCs, or smartphones.

See the section on 'how the ratings are collected' for further details on the survey methodology.

## GfK Probe Radio Ratings Software

GfK have developed GfK Probe, a fast, intuitive and flexible analysis and planning suite.

Probe gives users the ability to analyse listening behaviour to 15min increments, providing reach and frequency reporting for planning radio schedules up to 52 weeks, and is very user friendly – accommodating beginners and experts.

Probe also offers many additional features such as exclusive reach statistics, station and market profiling, audience duplication, multi-station reach analysis and ebb & flow, which shows the movement of audience between time periods and across stations.

For more information please contact Johan Haupt on 027 567 7333.

<b>Dr Morten Boyer</b> Global Strategy Director	Email: <a href="mailto:morten.boyer@gfk.com">morten.boyer@gfk.com</a> Mobile: +61 430 305 662
<b>Deb Hishon</b> Media Measurement Director, ANZ	Email: <a href="mailto:deb.hishon@gfk.com">deb.hishon@gfk.com</a> Mobile: +61 415 670 350
<b>Johan Haupt</b> Senior Account Manager, Radio	Email: <a href="mailto:johan.haupt@gfk.com">johan.haupt@gfk.com</a> Direct Phone: 027 567 7333
<b>Sian Barron</b> Account Director, Radio	Email: <a href="mailto:sian.barron@gfk.com">sian.barron@gfk.com</a> Mobile: +61 403 301 318

# 2024 RADIO SURVEY SCHEDULE



Week no	Survey Weeks Sunday - Saturday				Total NZ / All Markets	Commercial Radio Survey Release Dates
1		31	Jan	6		
2	Jan	7		13		
3		14		20		
4		21		27		
5		28	Feb	3		
6	Feb	4		10		
7		11		17		
8		18		24		
9		25	Mar	2		
10	Mar	3		9		
11		10		16		
12		17		23		
13		24		30		
14		31	Apr	6		
15	Apr	7		13		
16		14		20		
17		21		27		
18		28	May	4		
19	May	5		11		
20		12		18		
21		19		25		
22		26	Jun	1		
23	Jun	2		8		
24		9		15		
25		16		22		
26		23		29		
27		30	Jul	6		
28	Jul	7		13		
29		14		20		
30		21		27		
31		28	Aug	3		
32	Aug	4		10		
33		11		17		
34		18		24		
35		25		31		
36	Sep	1		7		
37		8		14		
38		15		21		
39		22		28		
40		29	Oct	5		
41	Oct	6		12		
42		13		19		
43		20		26		
44		27	Nov	2		
45	Nov	3		9		
46		10		16		
47		17		23		
48		24		30		
49	Dec	1		7		
50		8		14		
51		15		21		
52		22		28		

Easter Weekend

School Holidays

**Total NZ Market:** an aggregated survey that includes Auckland, Wellington, Christchurch, the ten individual regional markets and the additional Total NZ top up sample. Users can interrogate the data at a Total NZ level and by individual markets.

**Individual markets available are:**

- Auckland
- Wellington
- Christchurch
- Northland
- Waikato
- Tauranga
- Rotorua
- Hawke's Bay
- Taranaki
- Manawatu
- Nelson
- Dunedin
- Southland

# 2024 RADIO REPORTING PERIODS



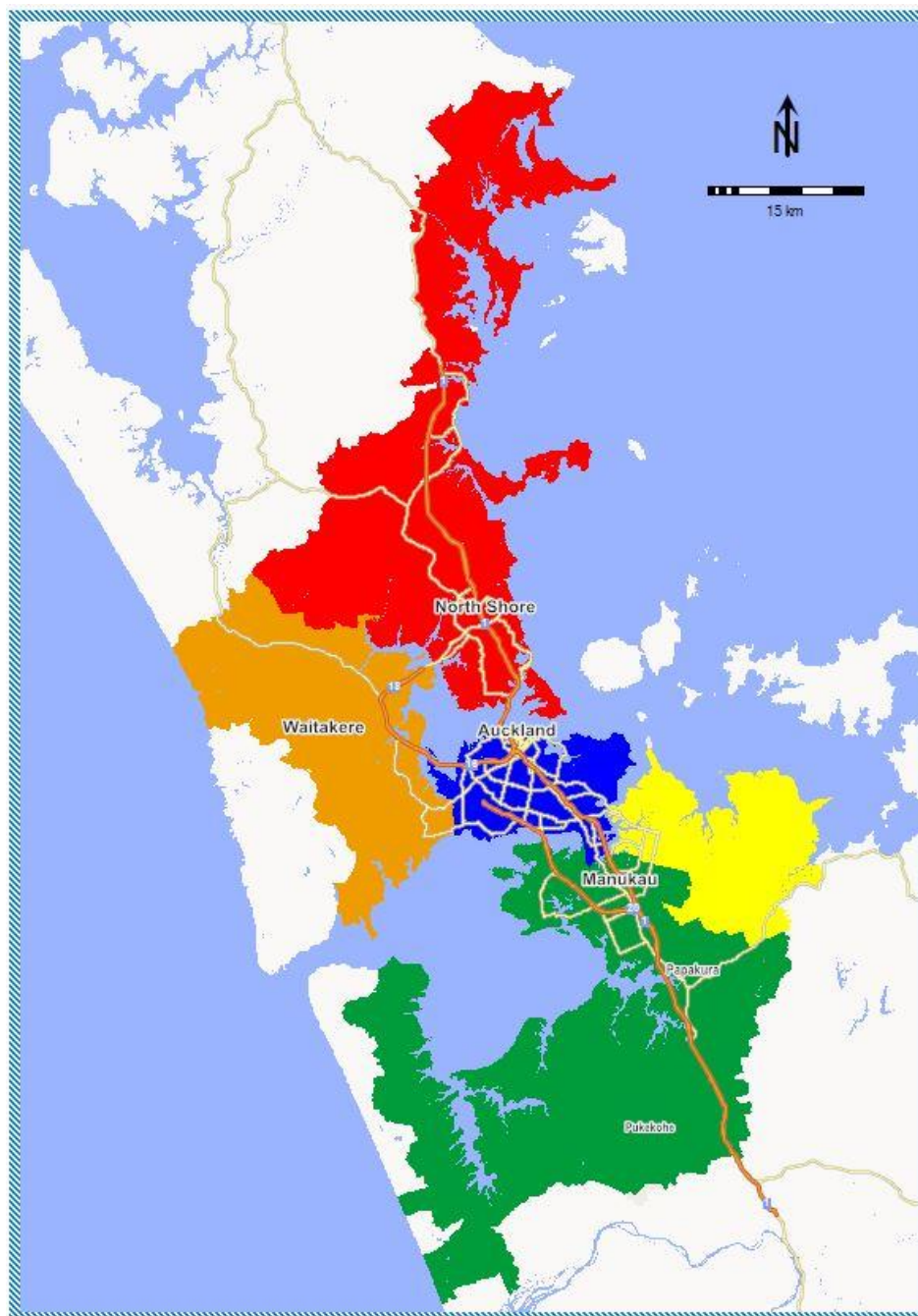
AUCKLAND / WELLINGTON / CHRISTCHURCH		
		Survey Release Date
Survey 1	Aug 13 to Nov 4 2023 & Feb 11 to May 4 2024	Thu May 23
Survey 2	Feb 11 to May 4 2024 & May 12 to Aug 3 2024	Thu Aug 22
Survey 3	May 12 to Aug 3 2024 & Aug 11 to Nov 2 2024	Thu Nov 21

10 INDIVIDUAL REGIONAL MARKETS		
		Survey Release Date
Survey 1	Feb 12 to May 6 2023 & May 14 to Aug 5 2023 & Aug 13 to Nov 4 2023 & Feb 11 to May 4 2024	Thu May 23
Survey 2	May 14 to Aug 5 2023 & Aug 13 to Nov 4 2023 & Feb 11 to May 4 2024 & May 12 to Aug 3 2024	Thu Aug 22
Survey 3	Aug 13 to Nov 4 2023 & Feb 11 to May 4 2024 & May 12 to Aug 3 2024 & Aug 11 to Nov 2 2024	Thu Nov 21

TOTAL NEW ZEALAND / MAJOR MARKETS		
		Survey Release Date
Survey 1	(A/W/C) Aug 13 to Nov 4 2023 & Feb 11 to May 4 2024 (Regional) Feb 12 to May 6 2023 & May 14 to Aug 5 2023 & Aug 13 to Nov 4 2023 & Feb 11 to May 4 2024	Thu May 23
Survey 2	(A/W/C) Feb 11 to May 4 2024 & May 12 to Aug 3 2024 (Regional) May 14 to Aug 5 2023 & Aug 13 to Nov 4 2023 & Feb 11 to May 4 2024 & May 12 to Aug 3 2024	Thu Aug 22
Survey 3	(A/W/C) May 12 to Aug 3 2024 & Aug 11 to Nov 2 2024 (Regional) Aug 13 to Nov 4 2023 & Feb 11 to May 4 2024 & May 12 to Aug 3 2024 & Aug 11 to Nov 2 2024	Thu Nov 21

OVERVIEW OF ROLLING SURVEYS	
<p>Rolling surveys is the term used to describe the method of merging waves of survey periods to generate a survey result. Under this method, markets such as Auckland, Christchurch and Wellington are in survey for 40 weeks of the year and provide four survey releases. Rolling surveys also tend to minimise the larger fluctuations in results that can be found between individual survey periods.</p> <p>The term Rolling Surveys comes from the actual process of adding a new wave of sample and dropping off the oldest wave thus rolling the sample.</p>	

## AUCKLAND



Auckland Regions	
1	Central
2	East
3	North
4	South
5	West

# Auckland Statistical Areas



1. Auckland Central								
Statistical Areas	Pop. 0+	Shr 0+	Statistical Areas	Pop. 0+	Shr 0+	Statistical Areas	Pop. 0+	Shr 0+
Anzac Avenue	3,010	0.18%	Meadowbank West	2,850	0.17%	Parnell East	3,230	0.19%
Auckland-University	110	0.01%	Mission Bay	2,760	0.16%	Parnell West	4,160	0.25%
Avondale Central (Auckland)	3,390	0.20%	Mission Bay Eastridge	1,735	0.10%	Penrose	895	0.05%
Avondale North East (Auckland)	2,580	0.15%	Morningside (Auckland)	3,940	0.23%	Point Chevalier East	3,230	0.19%
Avondale North West (Auckland)	2,890	0.17%	Mount Albert Central	3,840	0.23%	Point Chevalier North	2,340	0.14%
Avondale Rosebank (Auckland)	4,190	0.25%	Mount Albert North	4,160	0.25%	Point Chevalier West	2,860	0.17%
Avondale South (Auckland)	4,800	0.28%	Mount Albert South	2,430	0.14%	Point England North	2,950	0.17%
Avondale West (Auckland)	4,230	0.25%	Mount Albert West	2,640	0.16%	Point England South	2,360	0.14%
Balmoral	3,230	0.19%	Mount Eden East	2,850	0.17%	Ponsonby East	3,190	0.19%
Blockhouse Bay Central	3,320	0.20%	Mount Eden North	3,440	0.20%	Ponsonby West	2,240	0.13%
Blockhouse Bay East	2,280	0.13%	Mount Eden North East	1,295	0.08%	Quay Street-Customs Street	2,280	0.13%
Blockhouse Bay North	2,760	0.16%	Mount Eden South	3,890	0.23%	Queen Street	2,300	0.14%
Blockhouse Bay North East	2,400	0.14%	Mount Eden West	3,340	0.20%	Queen Street South West	1,975	0.12%
Blockhouse Bay South	3,040	0.18%	Mount Roskill Central East	3,800	0.22%	Remuera Abbots Park	3,830	0.23%
College Hill	610	0.04%	Mount Roskill Central North	3,500	0.21%	Remuera East	2,690	0.16%
Eden Park	1,650	0.10%	Mount Roskill Central South	2,570	0.15%	Remuera North	3,530	0.21%
Eden Terrace	3,220	0.19%	Mount Roskill Nirvana	2,410	0.14%	Remuera South	3,960	0.23%
Eden Valley	2,200	0.13%	Mount Roskill North	3,930	0.23%	Remuera Waiata	2,780	0.16%
Ellerslie Central	3,410	0.20%	Mount Roskill North East	2,410	0.14%	Remuera Waiatarua	2,510	0.15%
Ellerslie East	3,280	0.19%	Mount Roskill South	3,290	0.19%	Remuera Waitaramoa	3,920	0.23%
Ellerslie South	2,700	0.16%	Mount Roskill South East	3,560	0.21%	Remuera West	2,840	0.17%
Ellerslie West	125	0.01%	Mount Roskill West	3,770	0.22%	Rosebank Peninsula	35	0.00%
Epsom Central-North	3,850	0.23%	Mount Roskill White Swan	2,500	0.15%	Royal Oak East (Auckland)	3,040	0.18%
Epsom Central-South	3,920	0.23%	Mount St John	3,360	0.20%	Royal Oak West (Auckland)	2,780	0.16%
Epsom East	2,430	0.14%	Mount Wellington Central	3,010	0.18%	Saint Heliers North	3,940	0.23%
Epsom North	3,450	0.20%	Mount Wellington East	3,600	0.21%	Saint Heliers South	4,100	0.24%
Epsom South	2,260	0.13%	Mount Wellington Ferndale	3,540	0.21%	Saint Heliers West	3,530	0.21%
Freemans Bay	3,580	0.21%	Mount Wellington Hamlin	2,940	0.17%	Saint Johns East	3,060	0.18%
Glen Innes East-Wai O Taiki Bay	4,380	0.26%	Mount Wellington Industrial	30	0.00%	Saint Johns West	3,100	0.18%
Glen Innes West	4,960	0.29%	Mount Wellington North East	2,170	0.13%	Saint Marys Bay	2,004	0.12%
Glenavon	3,200	0.19%	Mount Wellington North West	3,140	0.19%	Sandringham Central	2,460	0.15%
Glendowie North	3,410	0.20%	Mount Wellington South East	3,150	0.19%	Sandringham East	3,470	0.20%
Glendowie South East	2,180	0.13%	Mount Wellington South West	3,040	0.18%	Sandringham North	3,910	0.23%
Glendowie South West	3,340	0.20%	Mount Wellington West	3,310	0.20%	Sandringham West	2,360	0.14%
Grafton	1,620	0.10%	New Windsor East	2,650	0.16%	Shortland Street	2,020	0.12%



# Auckland Statistical Areas



1. Auckland Central								
Statistical Areas	Pop. 0+	Shr 0+	Statistical Areas	Pop. 0+	Shr 0+	Statistical Areas	Pop. 0+	Shr 0+
Grey Lynn West	2,970	0.18%	Onehunga North	3,950	0.23%	Tamaki East	1,680	0.10%
Herne Bay	2,850	0.17%	Onehunga West	3,630	0.21%	Tamaki West	3,120	0.18%
Hillsborough Central (Auckland)	2,640	0.16%	Onehunga-Te Papapa Industrial	1,375	0.08%	Te Papapa	3,430	0.20%
Hillsborough North (Auckland)	1,630	0.10%	Orakei East	2,950	0.17%	The Strand	1,420	0.08%
Hillsborough South (Auckland)	2,820	0.17%	Orakei West	2,800	0.17%	Three Kings North	1,385	0.08%
Hobson Ridge Central	4,030	0.24%	Oranga	3,240	0.19%	Three Kings South	2,730	0.16%
Hobson Ridge North	2,690	0.16%	Otahuhu Central	1,880	0.11%	Victoria Park	3,470	0.20%
Hobson Ridge South	2,160	0.13%	Otahuhu East	2,770	0.16%	Waikowhai Bay	2,140	0.13%
Karangahape East	1,355	0.08%	Otahuhu North East	2,200	0.13%	Waterview	3,740	0.22%
Karangahape West	1,135	0.07%	Otahuhu North West	2,430	0.14%	Wesley East	2,200	0.13%
Kingsland	3,430	0.20%	Otahuhu South	4,100	0.24%	Wesley South	60	0.00%
Kohimarama Bay	2,460	0.15%	Otahuhu South West	4,200	0.25%	Wesley West	3,150	0.19%
Kohimarama Stadium	1,990	0.12%	Owairaka East	2,380	0.14%	Westmere North	2,170	0.13%
Lynfield Central	2,990	0.18%	Owairaka West	3,650	0.22%	Westmere South-Western Springs	2,880	0.17%
Lynfield Harbour View	1,810	0.11%	Panmure East	3,780	0.22%	Wynyard-Viaduct	1,198	0.07%
Maungawhau	2,970	0.18%	Panmure Glen Innes Industrial	335	0.02%	<b>1. Auckland Central</b>	<b>481,436</b>	<b>28.42%</b>
Meadowbank East	2,670	0.16%	Panmure West	295	0.02%			

2. Auckland East								
Statistical Areas	Pop. 0+	Shr 0+	Statistical Areas	Pop. 0+	Shr 0+	Statistical Areas	Pop. 0+	Shr 0+
Armoy	2,610	0.15%	Golflands	2,500	0.15%	Pakuranga Heights East	3,250	0.19%
Baverstock	4,410	0.26%	Half Moon Bay North East	2,240	0.13%	Pakuranga Heights North West	2,970	0.18%
Botany Downs East	2,380	0.14%	Half Moon Bay South East	3,290	0.19%	Pakuranga Heights South West	3,630	0.21%
Botany Downs West	3,420	0.20%	Half Moon Bay West	2,850	0.17%	Pakuranga North	3,080	0.18%
Botany Junction	7	0.00%	Highland Park (Auckland)	4,090	0.24%	Pakuranga West	3,070	0.18%
Bucklands Beach Central	1,925	0.11%	Howick Central	3,640	0.21%	Point View	2,930	0.17%
Bucklands Beach Murvale	2,690	0.16%	Howick East	3,840	0.23%	Redcastle	2,470	0.15%
Bucklands Beach North	3,030	0.18%	Howick West	4,220	0.25%	Savonna	2,810	0.17%
Bucklands Beach South	1,740	0.10%	Huntington Park	1,875	0.11%	Shelly Park	2,880	0.17%
Burswood	1,750	0.10%	Kawakawa Bay-Orere	271	0.02%	Somerville	4,500	0.27%
Clevedon	995	0.06%	Maraetai	2,570	0.15%	Sunkist Bay	3,410	0.20%
Cockle Bay	4,220	0.25%	Mellons Bay	4,100	0.24%	Sunnyhills East	3,620	0.21%
Dannemora North-Shamrock Park	2,450	0.14%	Middlefield	2,950	0.17%	Sunnyhills West	2,230	0.13%

# Auckland Statistical Areas



## 2. Auckland East

Statistical Areas	Pop. 0+	Shr 0+	Statistical Areas	Pop. 0+	Shr 0+	Statistical Areas	Pop. 0+	Shr 0+
Dannemora South	1,995	0.12%	Mission Heights North	3,650	0.22%	Te Puru	4,370	0.26%
East Tamaki	345	0.02%	Northpark North	2,940	0.17%	Turanga	3,340	0.20%
Eastern Beach	2,130	0.13%	Northpark South	2,190	0.13%	Tuscany Heights	1,687	0.10%
Farm Cove	2,230	0.13%	Pakuranga Central	3,720	0.22%	<b>2. Auckland East</b>	<b>139,509</b>	<b>8.24%</b>

## 3. Auckland North

Statistical Areas	Pop. 0+	Shr 0+	Statistical Areas	Pop. 0+	Shr 0+	Statistical Areas	Pop. 0+	Shr 0+
Akoranga	1,285	0.08%	Glenfield West	3,170	0.19%	Pinehill North	2,110	0.12%
Albany Central	1,055	0.06%	Greenhithe East	3,240	0.19%	Pinehill South	2,620	0.15%
Albany Heights	4,080	0.24%	Greenhithe South	2,130	0.13%	Puhoi Valley	904	0.05%
Albany South	3,450	0.20%	Greenhithe West	3,470	0.20%	Red Beach East	4,100	0.24%
Albany West	2,740	0.16%	Gulf Harbour North	3,130	0.18%	Red Beach West	3,180	0.19%
Army Bay	1,625	0.10%	Gulf Harbour South	3,070	0.18%	Rothsay Bay	3,070	0.18%
Awaruku	3,740	0.22%	Glenfield West	3,170	0.19%	Sandspit	1,045	0.06%
Bayswater	2,734	0.16%	Hatfields Beach	1,595	0.09%	Schnapper Rock	4,080	0.24%
Bayview East (Auckland)	3,820	0.23%	Hauraki	4,220	0.25%	Silverdale Central (Auckland)	555	0.03%
Bayview South (Auckland)	3,170	0.19%	Helensville Rural	113	0.01%	Silverdale South (Auckland)	1,230	0.07%
Bayview West (Auckland)	2,420	0.14%	Hillcrest East (Auckland)	4,020	0.24%	Snells Beach	3,780	0.22%
Beach Haven East	4,070	0.24%	Hillcrest North (Auckland)	3,550	0.21%	Stanley Point	1,935	0.11%
Beach Haven South	3,160	0.19%	Hillcrest West (Auckland)	3,470	0.20%	Stanmore Bay East	3,000	0.18%
Beach Haven West	3,480	0.21%	Kingsway	2,400	0.14%	Stanmore Bay West	2,850	0.17%
Belmont (Auckland)	3,010	0.18%	Kumeu Rural West	394	0.02%	Stillwater	1,020	0.06%
Birkdale Central	3,130	0.18%	Long Bay	2,930	0.17%	Sunnynook North	3,010	0.18%
Birkdale North	2,500	0.15%	Mahurangi Peninsula	1,180	0.07%	Sunnynook South	2,790	0.16%
Birkdale South	3,820	0.23%	Mairangi Bay North	3,140	0.19%	Takapuna Central	3,170	0.19%
Birkenhead North	2,840	0.17%	Mairangi Bay South	2,900	0.17%	Takapuna South	2,190	0.13%
Birkenhead North West	1,650	0.10%	Manly East	3,700	0.22%	Takapuna West	3,610	0.21%
Birkenhead South	3,050	0.18%	Manly West	2,430	0.14%	Taupaki	90	0.01%
Birkenhead West	2,930	0.17%	Milford Central	1,875	0.11%	Tawharanui Peninsula	2,130	0.13%
Browns Bay Central	3,100	0.18%	Milford West	3,130	0.18%	Tindalls-Matakatia	2,130	0.13%
Browns Bay South East	3,130	0.18%	Milldale	1,300	0.08%	Torbay East	2,510	0.15%
Browns Bay South West	4,470	0.26%	Millwater Central	4,070	0.24%	Torbay West	2,940	0.17%
Campbells Bay	2,980	0.18%	Millwater North	1,105	0.07%	Totara Vale North	3,330	0.20%
Cape Rodney	1,316	0.08%	Millwater South	4,490	0.27%	Totara Vale South	3,780	0.22%
Castor Bay North	2,440	0.14%	Muriwai	1,395	0.08%	Unsworth Heights East	3,790	0.22%
Castor Bay South	2,050	0.12%	Muriwai Valley-Bethells Beach	694	0.04%	Unsworth Heights West	2,640	0.16%

## 3. Auckland North

Statistical Areas	Pop. 0+	Shr 0+	Statistical Areas	Pop. 0+	Shr 0+	Statistical Areas	Pop. 0+	Shr 0+
Chatswood	3,510	0.21%	Murrays Bay East	2,210	0.04%	Vipond	3,070	0.18%
Cheltenham	1,880	0.11%	Murrays Bay West	2,710	0.15%	Wade Heads-Arkles Bay	2,030	0.12%
Coatesville	2,150	0.13%	Narrow Neck	4,260	0.19%	Waiake	4,060	0.24%
Dairy Flat North	2,230	0.13%	North Harbour	780	0.16%	Waikoukou Valley	1,310	0.08%
Dairy Flat South	1,715	0.10%	Northcote Central (Auckland)	2,590	0.14%	Waimauku	43	0.00%
Dairy Flat West	1,600	0.09%	Northcote Point (Auckland)	3,160	0.20%	Wainui-Waiwera	1,601	0.09%
Devonport	3,210	0.19%	Northcote South (Auckland)	2,670	0.09%	Waipatukahu	1,865	0.11%
Dome Valley-Matakana	1,424	0.08%	Northcote Tuff Crater	2,260	0.20%	Wairau Valley	205	0.01%
Fairview Heights	4,400	0.26%	Northcross	3,440	0.27%	Waitakere Ranges North	423	0.02%
Forrest Hill East	3,580	0.21%	Okura Bush	1,550	0.24%	Waitoki	1,541	0.09%
Forrest Hill North	2,530	0.15%	Orewa Central	3,330	0.20%	Warkworth East	3,970	0.23%
Forrest Hill West	4,110	0.24%	Orewa North	4,330	0.13%	Warkworth West	2,390	0.14%
Glamorgan	3,490	0.21%	Orewa South	3,170	0.14%	Westlake	2,890	0.17%
Glenfield Central	4,300	0.25%	Oteha East	3,340	0.07%	Whangaparaoa Central	2,470	0.15%
Glenfield East	2,440	0.14%	Oteha West	2,150		Windsor Park	1,715	0.10%
Glenfield North	3,670	0.22%	Paremoremo East	2,690		<b>3. Auckland North</b>	<b>354,853</b>	<b>20.95%</b>
Glenfield South West	4,140	0.24%	Paremoremo West	1,105				

## 4. Auckland South

Statistical Areas	Pop. 0+	Shr 0+	Statistical Areas	Pop. 0+	Shr 0+	Statistical Areas	Pop. 0+	Shr 0+
Aka Aka	695	0.04%	Kawakawa Bay-Orere	145	0.01%	Patumahoe	1,365	0.08%
Alfriston	4,160	0.25%	Kendallvale	1,105	0.07%	Patumahoe Rural	1,320	0.08%
Anselmi Ridge	2,600	0.15%	Kingseat-Karaka	3,210	0.19%	Puhinui East	3,010	0.18%
Aorere Central	2,270	0.13%	Leabank	3,360	0.20%	Puhinui North	4,520	0.27%
Aorere North	1,755	0.10%	Mangere Bridge	3,380	0.20%	Puhinui South	2,890	0.17%
Aorere South East	2,850	0.17%	Mangere Bridge Ambury	3,820	0.23%	Pukekohe Central	395	0.02%
Aorere South West	2,970	0.18%	Mangere Central	4,020	0.24%	Pukekohe Hospital	1,785	0.11%
Ardmore	1,490	0.09%	Mangere East	2,920	0.17%	Pukekohe North	2,030	0.12%
Auckland Airport	680	0.04%	Mangere Mascot	4,020	0.24%	Pukekohe North West	3,050	0.18%
Awhitu	2,767	0.16%	Mangere Mountain View	4,430	0.26%	Pukekohe South West	2,200	0.13%
Bombay Hills	1,710	0.10%	Mangere North	3,900	0.23%	Pukekohe West	5,060	0.30%
Botany Junction	188	0.01%	Mangere South	4,000	0.24%	Puni	1,809	0.11%
Bremner Ridge	1,880	0.11%	Mangere South East	4,170	0.25%	Ramarama	2,570	0.15%
Buckland	1,275	0.08%	Mangere West	3,910	0.23%	Randwick Park East	2,890	0.17%
Burbank	4,470	0.26%	Manukau Central	1,085	0.06%	Randwick Park West	3,970	0.23%
Cape Hill	1,635	0.10%	Manurewa Central	4,190	0.25%	Red Hill	2,880	0.17%

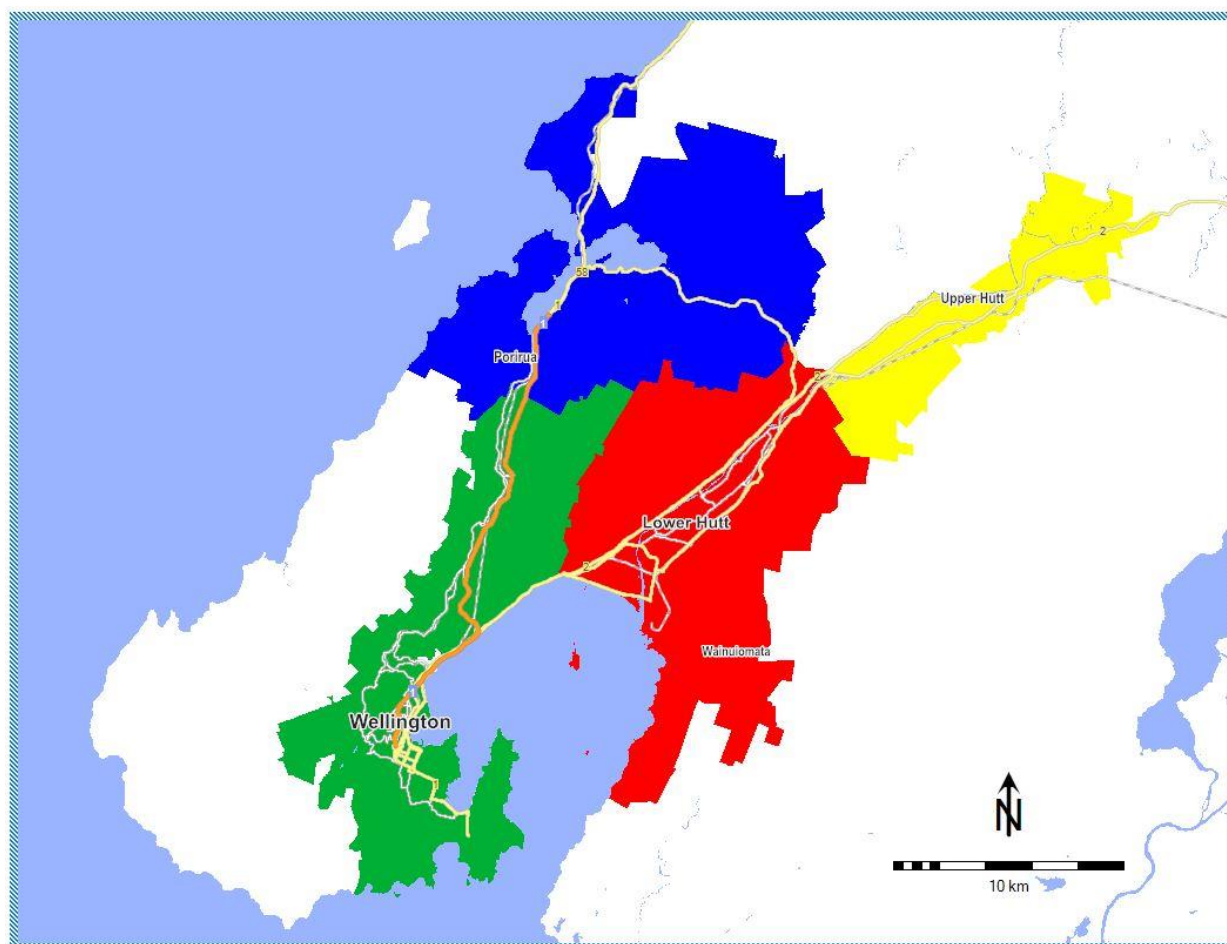
# Auckland Statistical Areas



4. Auckland South								
Statistical Areas	Pop. 0+	Shr 0+	Statistical Areas	Pop. 0+	Shr 0+	Statistical Areas	Pop. 0+	Shr 0+
Chapel Downs	3,590	0.21%	Manurewa East	3,370	0.20%	Runciman	800	0.05%
Clarks Beach	1,535	0.09%	Manurewa South	3,210	0.19%	Sutton Park	4,250	0.25%
Clendon Park East	2,550	0.15%	Manurewa West	3,170	0.19%	Takanini Central	1,245	0.07%
Clendon Park North	3,690	0.22%	Massey Road North	3,680	0.22%	Takanini East	3,680	0.22%
Clendon Park West	3,650	0.22%	Massey Road South	1,925	0.11%	Takanini Industrial	15	0.00%
Clevedon	244	0.01%	Massey Road West	4,220	0.25%	Takanini McLennan	2,250	0.13%
Clover Park East	3,000	0.18%	Mission Heights South	3,490	0.21%	Takanini North	2,930	0.17%
Clover Park North	3,130	0.18%	Opaheke	3,250	0.19%	Takanini South	5,090	0.30%
Clover Park South	3,580	0.21%	Ormiston Central	4,870	0.29%	Takanini South East	2,010	0.12%
Cloverlea (Auckland)	2,530	0.15%	Ormiston East	2,500	0.15%	Takanini West	3,410	0.20%
Conifer Grove East	2,480	0.15%	Ormiston North	2,320	0.14%	Tamakae	2,680	0.16%
Conifer Grove West	3,040	0.18%	Ormiston South	3,630	0.21%	The Gardens (Auckland)	4,360	0.26%
Dingwall	2,970	0.18%	Ormiston South East	1,065	0.06%	Totara Heights	3,290	0.19%
Donegal Park East	1,075	0.06%	Otahuhu Industrial	100	0.01%	Tuakau Rural	555	0.03%
Donegal Park West	4,030	0.24%	Otara Central	2,930	0.17%	Tuscany Heights	143	0.01%
Drury East	865	0.05%	Otara East	4,260	0.25%	Twin Parks Rise	2,270	0.13%
Drury South Crossing	580	0.03%	Otara South	3,260	0.19%	Waihoehoe	2,170	0.13%
Drury West	695	0.04%	Otara South West	2,110	0.12%	Waiuku Central	1,410	0.08%
Favona East	4,270	0.25%	Otara West	3,570	0.21%	Waiuku East	1,925	0.11%
Favona North	3,130	0.18%	Pahurehure	3,570	0.21%	Wattle Downs East	2,370	0.14%
Favona West	3,780	0.22%	Papakura Central	3,820	0.23%	Wattle Downs North	3,640	0.21%
Ferguson	3,370	0.20%	Papakura East	3,310	0.20%	Wattle Downs West	4,210	0.25%
Glenbrook	2,630	0.16%	Papakura Eastburn	3,680	0.22%	Weymouth Central	3,430	0.20%
Goodwood Heights East	2,990	0.18%	Papakura Industrial	345	0.02%	Weymouth East	3,130	0.18%
Goodwood Heights West	1,915	0.11%	Papakura Kelvin	2,490	0.15%	Weymouth South	4,060	0.24%
Grange	2,750	0.16%	Papakura Massey Park	3,320	0.20%	Weymouth West	2,660	0.16%
Hamilton Estate	2,700	0.16%	Papakura North	4,070	0.24%	Wiri East	2,380	0.14%
Harania North	4,220	0.25%	Papakura North East	2,300	0.14%	Wiri North	3,030	0.18%
Harania South	3,810	0.22%	Papakura West	1,975	0.12%	Wiri West	1,380	0.08%
Harbour View Heights	785	0.05%	Papatoetoe Central East	3,560	0.21%	<b>4. Auckland South</b>	<b>452,587</b>	<b>26.72%</b>
Hillpark North	2,750	0.16%	Papatoetoe Central West	3,900	0.23%			
Hillpark South	3,860	0.23%	Papatoetoe East	3,570	0.21%			
Hilltop (Auckland)	4,190	0.25%	Papatoetoe North	4,270	0.25%			
Hingaia	2,610	0.15%	Papatoetoe North East	3,470	0.20%			
Homai Central	3,640	0.21%	Papatoetoe North West	3,500	0.21%			
Homai East	3,690	0.22%	Papatoetoe South	3,880	0.23%			
Homai West	3,100	0.18%	Papatoetoe South West	3,440	0.20%			
Karaka Creek	1,785	0.11%	Papatoetoe West	4,300	0.25%			
Karaka Lakes	3,380	0.20%						

5. Auckland West								
Statistical Areas	Pop. 0+	Shr 0+	Statistical Areas	Pop. 0+	Shr 0+	Statistical Areas	Pop. 0+	Shr 0+
Birdwood West	925	0.05%	Konini Road	2,080	0.12%	Sunnyvale West-Parrs Park	2,770	0.16%
Fruitvale	3,190	0.19%	Kumeu Rural East	2,810	0.17%	Swanson	3,410	0.20%
Glen Eden Central	3,980	0.23%	Kumeu Rural West	1,421	0.08%	Swanson Rural	2,420	0.14%
Glen Eden Konini	2,880	0.17%	Kumeu-Huapai North	4,700	0.28%	Taupaki	1,635	0.10%
Glen Eden North	2,710	0.16%	Kumeu-Huapai South	2,230	0.13%	Te Atatu Peninsula Central	3,830	0.23%
Glen Eden Rosier	3,760	0.22%	Laingholm	2,390	0.14%	Te Atatu Peninsula East	2,970	0.18%
Glen Eden West	3,930	0.23%	Massey Central	3,660	0.22%	Te Atatu Peninsula North West	3,610	0.21%
Glen Eden Woodglen	3,130	0.18%	Massey Keegan	3,900	0.23%	Te Atatu Peninsula West	4,170	0.25%
Glendene North East	2,480	0.15%	Massey Red Hills	290	0.02%	Te Atatu South-Central	3,670	0.22%
Glendene North West	2,610	0.15%	Massey Royal Road West	3,210	0.19%	Te Atatu South-Edmonton	3,380	0.20%
Glendene South	3,070	0.18%	Massey South	3,960	0.23%	Te Atatu South-McLeod North	2,250	0.13%
Green Bay North	1,920	0.11%	Massey West	2,970	0.18%	Te Atatu South-McLeod South	3,760	0.22%
Green Bay South	3,010	0.18%	McLaren Memorial Park	3,640	0.21%	Te Atatu South-North	3,570	0.21%
Henderson Central	1,420	0.08%	New Lynn Central	590	0.03%	Titirangi East	3,430	0.20%
Henderson East	4,660	0.28%	New Lynn Central South	3,080	0.18%	Titirangi South	4,020	0.24%
Henderson Larnoch	3,870	0.23%	New Lynn North	3,690	0.22%	Waiaatarua	2,360	0.14%
Henderson Lincoln East	185	0.01%	New Lynn North West	3,590	0.21%	Waikoukou Valley	426	0.03%
Henderson Lincoln South	3,500	0.21%	New Lynn Seabrook	3,100	0.18%	Waimauku	1,282	0.08%
Henderson Lincoln West	3,660	0.22%	New Lynn South	2,790	0.16%	Waima-Woodlands Park	2,750	0.16%
Henderson North	2,270	0.13%	New Lynn South East	2,240	0.13%	Waitakere	1,875	0.11%
Henderson North East	2,770	0.16%	Oratia	2,200	0.13%	Waitakere Ranges South	773	0.05%
Henderson Valley	1,455	0.09%	Ranui Domain	3,790	0.22%	West Harbour Clearwater Cove	3,565	0.21%
Henderson Valley Park	3,010	0.18%	Ranui North	4,210	0.25%	West Harbour Luckens Point	3,450	0.20%
Henderson West	3,120	0.18%	Ranui South East	3,160	0.19%	West Harbour West	4,640	0.27%
Hobsonville	1,670	0.10%	Ranui South West	3,050	0.18%	Western Heights (Auckland)	3,820	0.23%
Hobsonville Point Catalina Bay	2,970	0.18%	Riverhead	3,770	0.22%	Westgate South	2,880	0.17%
Hobsonville Point Park	4,140	0.24%	Royal Heights North	3,980	0.23%	Whenuapai	4,280	0.25%
Hobsonville Scott Point	3,590	0.21%	Royal Heights South	4,040	0.24%	Whenuapai West	1,105	0.07%
Kaurilands	3,230	0.19%	Summerland North	2,730	0.16%	<b>5. Auckland West</b>	<b>265,486</b>	<b>15.67%</b>
Kelston North	2,990	0.18%	Summerland South	3,390	0.20%			
Kelston South	2,850	0.17%	Sunnyvale East	3,770	0.22%			

# WELLINGTON



Wellington Regions	
1	Porirua
2	Upper Hutt
3	Lower Hutt
4	Wellington City



# Wellington Statistical Areas



1. Porirua								
Statistical Areas	Pop. 0+	Shr 0+	Statistical Areas	Pop. 0+	Shr 0+	Statistical Areas	Pop. 0+	Shr 0+
Aotea	4,160	0.96%	Onepoto	2,000	0.46%	Pukerua Bay	2,120	0.49%
Ascot Park	3,010	0.69%	Paekakariki Hill	375	0.09%	Ranui Heights	1,405	0.32%
Camborne	2,070	0.48%	Papakowhai	2,330	0.54%	Titahi Bay North	2,900	0.67%
Cannons Creek East	4,040	0.93%	Paremata	2,580	0.59%	Titahi Bay South	4,030	0.93%
Cannons Creek North	3,700	0.85%	Pauatahanui	1,040	0.24%	Waitangirua Corinna	3,080	0.71%
Cannons Creek South	1,720	0.40%	Plimmerton	2,160	0.50%	Waitangirua Tairangi	1,560	0.36%
Elsdon-Takapuwahia	2,540	0.58%	Porirua Central	950	0.22%	Whitby	2,940	0.68%
Endeavour East	3,210	0.74%	Porirua East	2,420	0.56%	<b>1. Porirua</b>	<b>62,180</b>	<b>14.28%</b>
Endeavour West	2,680	0.62%	Postgate	3,160	0.73%			

2. Upper Hutt								
Statistical Areas	Pop. 0+	Shr 0+	Statistical Areas	Pop. 0+	Shr 0+	Statistical Areas	Pop. 0+	Shr 0+
Birchville-Brown Owl	3,840	0.88%	Mangaroa	238	0.05%	Totara Park	2,980	0.68%
Brentwood (Upper Hutt City)	2,530	0.58%	Maoribank	3,630	0.83%	Trentham North	3,360	0.77%
Clouston Park	2,480	0.57%	Pinehaven	2,100	0.48%	Trentham South	3,340	0.77%
Ebdentown	2,650	0.61%	Poets Block	2,670	0.61%	Upper Hutt Central	710	0.16%
Elderslea	3,410	0.78%	Silverstream (Upper Hutt City)	3,610	0.83%	Wallaceville	2,580	0.59%
Heretaunga	2,530	0.58%	Te Marua	1,050	0.24%	<b>2. Upper Hutt</b>	<b>43,708</b>	<b>10.04%</b>

3. Lower Hutt								
Statistical Areas	Pop. 0+	Shr 0+	Statistical Areas	Pop. 0+	Shr 0+	Statistical Areas	Pop. 0+	Shr 0+
Alicetown-Melling	3,010	0.69%	Homedale West	2,860	0.66%	Petone East	4,250	0.98%
Arakura	3,200	0.74%	Hutt Central North	1,085	0.25%	Petone Esplanade	2,910	0.67%
Avalon East	2,650	0.61%	Hutt Central South	3,210	0.74%	Stokes Valley Central	2,330	0.54%
Avalon West	2,770	0.64%	Kelson	3,090	0.71%	Stokes Valley North	3,610	0.83%
Belmont (Lower Hutt City)	2,960	0.68%	Korokoro	1,635	0.38%	Taita North	3,390	0.78%
Belmont Park	335	0.08%	Manor Park	485	0.11%	Taita South	3,340	0.77%
Boulcott	2,780	0.64%	Manuka	1,880	0.43%	Tirohanga	1,335	0.31%
Delaney	2,800	0.64%	Maungaraki	4,260	0.98%	Wainuiomata Central	2,020	0.46%
Eastbourne	2,810	0.65%	Moera	1,840	0.42%	Wainuiomata West	3,980	0.91%
Eastern Bays	2,140	0.49%	Naenae Central	3,910	0.90%	Waiwhetu North	1,735	0.40%
Epuni East	3,200	0.74%	Naenae North	2,810	0.65%	Waiwhetu South	3,120	0.72%
Epuni West	3,570	0.82%	Naenae South	2,940	0.68%	Waterloo East	3,290	0.76%

# Wellington Statistical Areas



## 3. Lower Hutt

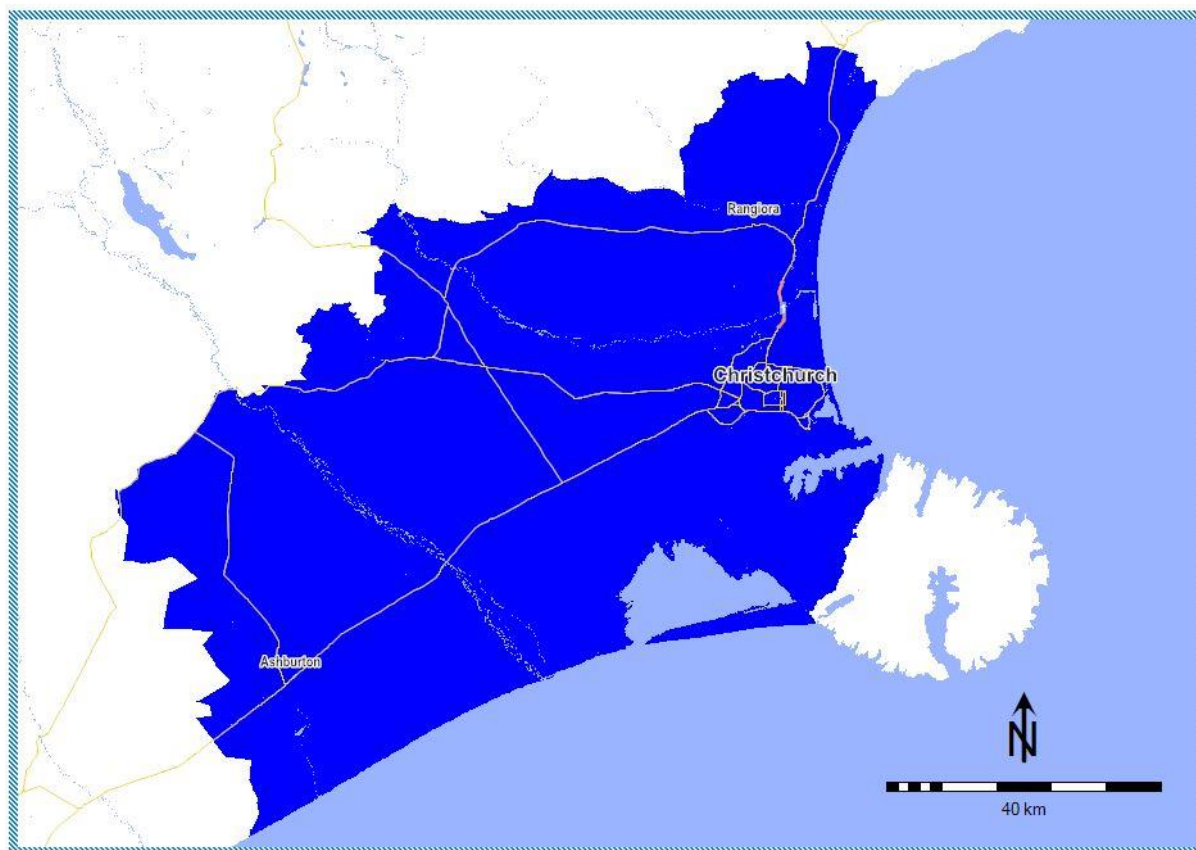
Statistical Areas	Pop. 0+	Shr 0+	Statistical Areas	Pop. 0+	Shr 0+	Statistical Areas	Pop. 0+	Shr 0+
Glendale	4,490	1.03%	Normandale	2,110	0.48%	Waterloo West	2,500	0.57%
Gracefield	295	0.07%	Pencarrow	710	0.16%	Woburn	1,820	0.42%
Homedale East	3,310	0.76%	Petone Central	1,175	0.27%	<b>3. Lower Hutt</b>	<b>113,950</b>	<b>26.17%</b>

## 4. Wellington City

Statistical Areas	Pop. 0+	Shr 0+	Statistical Areas	Pop. 0+	Shr 0+	Statistical Areas	Pop. 0+	Shr 0+
Aro Valley	4,230	0.97%	Karori Park	2,760	0.63%	Newtown West	3,870	0.89%
Berhampore	3,830	0.88%	Karori South	3,740	0.86%	Ngaio North	2,560	0.59%
Broadmeadows	1,675	0.38%	Karori West	2,900	0.67%	Ngaio South	3,050	0.70%
Brooklyn East	2,790	0.64%	Kelburn	2,310	0.53%	Northland (Wellington City)	3,740	0.86%
Brooklyn North	2,330	0.54%	Khandallah North	2,730	0.63%	Onslow	1,860	0.43%
Brooklyn South	1,850	0.42%	Khandallah Reserve	2,030	0.47%	Oriental Bay	1,440	0.33%
Churton Park North	3,950	0.91%	Khandallah South	2,030	0.47%	Owhiro Bay	2,050	0.47%
Churton Park South	3,520	0.81%	Kilbirnie Central	2,750	0.63%	Paparangi	2,750	0.63%
Courtenay	2,192	0.50%	Kilbirnie East	2,160	0.50%	Pipitea-Kaiwharawhara	845	0.19%
Crofton Downs	1,745	0.40%	Kingston-Mornington-Vogeltown	3,260	0.75%	Rongotai	10	0.00%
Dixon Street East	4,420	1.02%	Linden	3,430	0.79%	Roseneath	1,830	0.42%
Dixon Street West	1,940	0.45%	Lyll Bay	2,690	0.62%	Seatoun	2,390	0.55%
Evans Bay	1,180	0.27%	Makara-Ohariu	902	0.21%	Southgate	1,170	0.27%
Glenside-Churton Park East	505	0.12%	Maupuia	1,510	0.35%	Strathmore (Wellington City)	3,860	0.89%
Grenada North	2,410	0.55%	Melrose	1,365	0.31%	Takapu-Horokiwi	285	0.07%
Grenada Village	1,855	0.43%	Miramar Central	2,100	0.48%	Tawa Central	2,720	0.62%
Hataitai North East	2,310	0.53%	Miramar East	3,030	0.70%	Tawa North	3,310	0.76%
Hataitai North West	1,810	0.42%	Miramar North	1,350	0.31%	Tawa South	3,460	0.79%
Hataitai South	1,485	0.34%	Miramar South	3,540	0.81%	Thorndon North	2,560	0.59%
Houghton Bay	1,715	0.39%	Mount Cook East	3,150	0.72%	Thorndon South	1,815	0.42%
Island Bay East	3,670	0.84%	Mount Cook North	3,420	0.79%	Vivian East	2,910	0.67%
Island Bay West	3,460	0.79%	Mount Cook South	1,290	0.30%	Vivian West	4,400	1.01%
Johnsonville Central	3,070	0.71%	Mount Victoria North	3,110	0.71%	Wadestown	3,780	0.87%
Johnsonville North	3,420	0.79%	Mount Victoria South	1,845	0.42%	Wellington Botanic Gardens	1,220	0.28%
Johnsonville South	1,835	0.42%	Newlands East	2,950	0.68%	Wellington Central	3,520	0.81%
Johnsonville West	3,470	0.80%	Newlands North	3,190	0.73%	Wellington University	1,645	0.38%
Karaka Bay-Worser Bay	1,565	0.36%	Newlands South	2,410	0.55%	Wilton	2,180	0.50%
Karori East	3,410	0.78%	Newtown North	2,070	0.48%	Woodridge	1,895	0.44%
Karori North	2,610	0.60%	Newtown South	4,130	0.95%	<b>4. Wellington City</b>	<b>215,529</b>	<b>49.51%</b>



# CHRISTCHURCH



Christchurch Regions	
	Christchurch

# Christchurch Statistical Areas



1. Christchurch								
Statistical Areas	Pop. 0+	Shr 0+	Statistical Areas	Pop. 0+	Shr 0+	Statistical Areas	Pop. 0+	Shr 0+
Addington East	3,160	0.55%	Halswell South East	1,125	0.19%	Rangiora North West	2,520	0.44%
Addington North	5	0.00%	Halswell South West	410	0.07%	Rangiora South East	2,800	0.48%
Addington West	2,650	0.46%	Halswell West	4,550	0.79%	Rangiora South West	2,570	0.44%
Aidanfield	4,130	0.71%	Hampstead	3,200	0.55%	Ravenswood	1,110	0.19%
Allenton East	2,150	0.37%	Harewood	1,395	0.24%	Rawhiti	2,830	0.49%
Allenton North	2,670	0.46%	Heathcote Valley	2,310	0.40%	Redcliffs	2,080	0.36%
Allenton South	2,280	0.39%	Hei Hei	3,550	0.61%	Redwood East	3,280	0.57%
Amberley	2,390	0.41%	Hillmorton	2,950	0.51%	Redwood North	2,770	0.48%
Aranui	4,410	0.76%	Hillsborough (Christchurch City)	2,510	0.43%	Redwood West	2,190	0.38%
Ashburton Central	150	0.03%	Holmwood	2,160	0.37%	Regents Park	1,710	0.30%
Ashburton East	1,875	0.32%	Hoon Hay East	3,310	0.57%	Riccarton Central	50	0.01%
Ashburton Forks	263	0.05%	Hoon Hay South	2,200	0.38%	Riccarton East	1,360	0.23%
Ashburton North	1,100	0.19%	Hoon Hay West	3,620	0.63%	Riccarton Racecourse	1,815	0.31%
Ashburton West	995	0.17%	Hornby Central	140	0.02%	Riccarton South	4,030	0.70%
Ashgrove	1,640	0.28%	Hornby South	3,210	0.55%	Riccarton West	3,870	0.67%
Ashley Forest	608	0.10%	Hornby West	2,570	0.44%	Richmond North (Christchurch City)	2,440	0.42%
Ashley Gorge	1,205	0.21%	Huntsbury	2,470	0.43%	Richmond South (Christchurch City)	2,300	0.40%
Ashley-Sefton	2,410	0.42%	Ilam North	3,950	0.68%	Rolleston Central	3,860	0.67%
Avondale (Christchurch City)	2,390	0.41%	Ilam South	3,390	0.59%	Rolleston Izone	20	0.00%
Avonhead East	2,970	0.51%	Ilam University	2,600	0.45%	Rolleston North Central	4,610	0.80%
Avonhead North	1,795	0.31%	Irwell	1,370	0.24%	Rolleston North East	2,710	0.47%
Avonhead South	3,360	0.58%	Islington	1,015	0.18%	Rolleston South Central	2,560	0.44%
Avonhead West	1,910	0.33%	Islington-Hornby Industrial	330	0.06%	Rolleston South East	5,350	0.92%
Avonside	1,680	0.29%	Jellie Park	3,090	0.53%	Rolleston South West	1,675	0.29%
Awatea North	2,080	0.36%	Kaiapoi Central	2,230	0.39%	Rolleston Tauwharekakaho	2,940	0.51%
Awatea South	2,300	0.40%	Kaiapoi East	260	0.04%	Russley	2,390	0.41%
Balcairn	2,510	0.43%	Kaiapoi North West	2,180	0.38%	Rutland	2,830	0.49%
Banks Peninsula South	267	0.05%	Kaiapoi South	1,985	0.34%	Shirley East	2,670	0.46%
Bankside	1,905	0.33%	Kaiapoi West	1,315	0.23%	Shirley West	4,250	0.73%
Beckenham	2,420	0.42%	Kennedys Bush	835	0.14%	Silverstream (Waimakariri District)	1,520	0.26%
Belfast East	2,570	0.44%	Kingsbury	2,790	0.48%	Sockburn North	4,100	0.71%
Belfast West	1,965	0.34%	Kirwee	1,545	0.27%	Sockburn South	410	0.07%
Bexley	2,720	0.47%	Ladbrooks	2,000	0.35%	Somerfield East	3,780	0.65%
Bishopdale North	4,320	0.75%	Lancaster Park	270	0.05%	Somerfield West	3,000	0.52%
Bishopdale South	2,280	0.39%	Leeston	2,410	0.42%	South New Brighton	3,250	0.56%
Bishopdale West	2,910	0.50%	Lilybrook	3,030	0.52%	Southbridge	2,710	0.47%
Branston	2,050	0.35%	Lincoln East	3,030	0.52%	Southbrook	865	0.15%
Broken Run	640	0.11%	Lincoln North	2,940	0.51%	Sovereign Palms	4,050	0.70%
Bromley North	50	0.01%	Lincoln South	430	0.07%	Spreydon North	3,970	0.69%

# Christchurch Statistical Areas



1. Christchurch								
Statistical Areas	Pop. 0+	Shr 0+	Statistical Areas	Pop. 0+	Shr 0+	Statistical Areas	Pop. 0+	Shr 0+
Bromley South	2,950	0.51%	Lincoln West	3,770	0.65%	Spreydon South	2,450	0.42%
Brookhaven-Ferrymead	1,095	0.19%	Linwood Central	3,160	0.55%	Spreydon West	3,200	0.55%
Brooklands-Spencerville	755	0.13%	Linwood East	2,200	0.38%	Springston	2,370	0.41%
Broomfield	2,850	0.49%	Linwood North	2,850	0.49%	St Albans East	3,430	0.59%
Bryndwr North	3,430	0.59%	Loburn	2,430	0.42%	St Albans North	2,210	0.38%
Bryndwr South	2,880	0.50%	Lyttelton	3,210	0.55%	St Albans West	2,660	0.46%
Burlington-Oakbridge	335	0.06%	Mairehau North	3,010	0.52%	St Martins	2,820	0.49%
Burnham Camp	1,490	0.26%	Mairehau South	3,860	0.67%	Stanmore	2,340	0.40%
Burnside	3,710	0.64%	Malvern	2,670	0.46%	Starvation Hill-Cust	2,470	0.43%
Burnside Park	3,340	0.58%	Mandeville	1,930	0.33%	Strowan	3,560	0.61%
Burnside West	1,000	0.17%	Marshland	775	0.13%	Styx	1,065	0.18%
Burwood North	2,510	0.43%	McLeans Island	195	0.03%	Sumner	3,530	0.61%
Burwood South	3,430	0.59%	Merivale	3,010	0.52%	Swannanoa-Eyretown	1,040	0.18%
Bush Inn	3,320	0.57%	Methven	2,020	0.35%	Sydenham Central	430	0.07%
Cairnbrae	1,501	0.26%	Middleton	210	0.04%	Sydenham North	2,270	0.39%
Casebrook	4,260	0.74%	Mona Vale	1,460	0.25%	Sydenham South	2,800	0.48%
Cashmere East	3,540	0.61%	Motukarara	665	0.11%	Sydenham West	1,330	0.23%
Cashmere West	3,190	0.55%	Mount Pleasant	3,850	0.66%	Tai Tapu	1,340	0.23%
Charing Cross	990	0.17%	Netherby	2,460	0.42%	Teddington	255	0.04%
Charleston (Christchurch City)	1,540	0.27%	New Brighton	3,390	0.59%	Templeton	1,785	0.31%
Chertsey	1,820	0.31%	Newtons Road	3,860	0.67%	Tinwald North	1,410	0.24%
Christchurch Airport	170	0.03%	North Beach	4,140	0.72%	Tinwald South	2,450	0.42%
Christchurch Central	140	0.02%	Northcote (Christchurch City)	2,780	0.48%	Torlesse	1,265	0.22%
Christchurch Central-East	3,280	0.57%	Northlands (Christchurch City)	120	0.02%	Tower Junction	190	0.03%
Christchurch Central-North	3,100	0.54%	Northwood	3,540	0.61%	Trents	2,070	0.36%
Christchurch Central-South	945	0.16%	Oaklands East	3,420	0.59%	Tuahiwi	1,005	0.17%
Christchurch Central-West	1,310	0.23%	Oaklands West	2,780	0.48%	Upper Riccarton	1,865	0.32%
Clarkville	1,510	0.26%	Ohoka	1,770	0.31%	Waikuku	695	0.12%
Clearwater	745	0.13%	Opawa	1,320	0.23%	Waikuku Beach	1,120	0.19%
Clifton Hill	1,820	0.31%	Otakaro-Avon River Corridor	115	0.02%	Waimairi Beach	1,285	0.22%
Dallington	2,410	0.42%	Oxford	2,380	0.41%	Wainoni	2,860	0.49%
Darfield	3,150	0.54%	Oxford Estate	1,405	0.24%	Waitikiri	2,780	0.48%
Deans Bush	2,580	0.45%	Papanui East	2,280	0.39%	Waltham	2,080	0.36%
Diamond Harbour	1,650	0.28%	Papanui North	1,990	0.34%	West Eyretown	1,595	0.28%
Edgware North	1,375	0.24%	Papanui West	3,080	0.53%	West Melton	2,430	0.42%
Edgware South	3,330	0.58%	Paparua	1,010	0.17%	Westmorland	2,510	0.43%
Eiffelton	2,329	0.40%	Parklands	4,060	0.70%	Wharenui	2,870	0.50%
Ensors	2,360	0.41%	Pegasus	4,160	0.72%	Wigram East	920	0.16%

# Christchurch Statistical Areas



1. Christchurch								
Statistical Areas	Pop. 0+	Shr 0+	Statistical Areas	Pop. 0+	Shr 0+	Statistical Areas	Pop. 0+	Shr 0+
Eyrewell	2,050	0.35%	Pegasus Bay	1,095	0.19%	Wigram North	890	0.15%
Faringdon	5,870	1.01%	Phillipstown	4,430	0.77%	Wigram South	1,460	0.25%
Fendalton	1,955	0.34%	Port Hills	65	0.01%	Wigram West	1,640	0.28%
Fernside	1,405	0.24%	Prebbleton North	2,570	0.44%	Winchmore-Wakanui	1,635	0.28%
Glenroy-Hororata	1,345	0.23%	Prebbleton South	2,760	0.48%	Woodend	3,390	0.59%
Glentunnel	1,255	0.22%	Prestons	2,490	0.43%	Woolston East	3,230	0.56%
Governors Bay	945	0.16%	Prestons Park	2,400	0.41%	Woolston North	3,490	0.60%
Hagley Park	35	0.01%	Queenspark	3,560	0.61%	Woolston South	505	0.09%
Halkett	1,725	0.30%	Rakaia	1,580	0.27%	Woolston West	1,260	0.22%
Halswell North	2,100	0.36%	Rangiora Central	15	0.00%	Yaldhurst	2,240	0.39%
Halswell South	2,350	0.41%	Rangiora North East	1,925	0.33%	<b>1. Christchurch</b>	<b>578,998</b>	<b>100.0%</b>

## DUNEDIN



Dunedin Regions	
	Dunedin

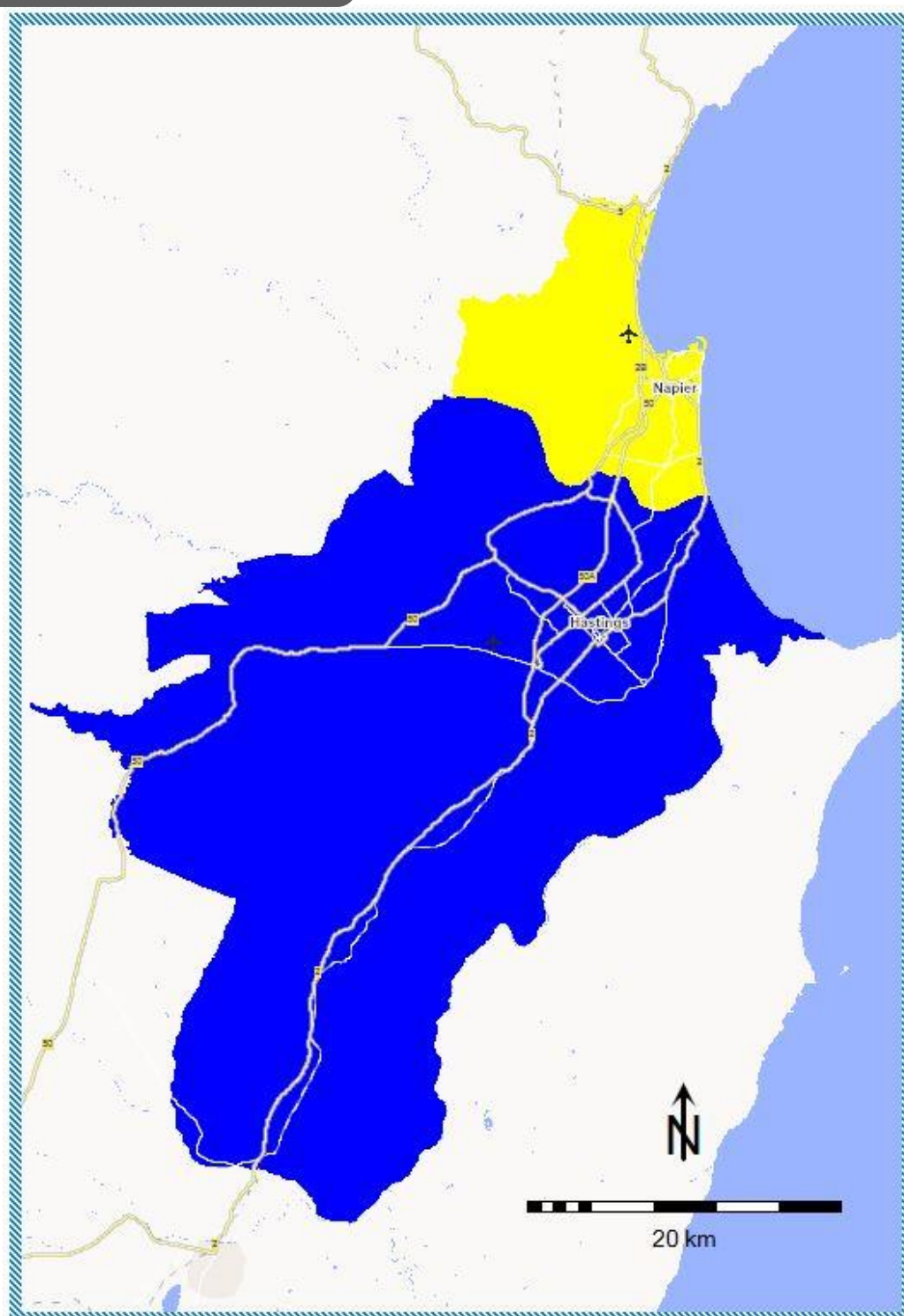
# Dunedin Statistical Areas



1. Dunedin								
Statistical Areas	Pop. 0+	Shr 0+	Statistical Areas	Pop. 0+	Shr 0+	Statistical Areas	Pop. 0+	Shr 0+
Abbotsford	3,010	2.36%	Green Island	2,450	1.92%	Pine Hill-Dalmore	2,450	1.92%
Andersons Bay	2,490	1.96%	Halfway Bush	1,930	1.52%	Port Chalmers	1,480	1.16%
Arthur Street	1,630	1.28%	Harbourside	25	0.02%	Ravensbourne-St Leonards	1,990	1.56%
Belleknowes	2,270	1.78%	Helensburgh	1,240	0.97%	Roseneath-Sawyers Bay	1,575	1.24%
Brighton	1,550	1.22%	Hillside-Portsmouth Drive	90	0.07%	Roslyn (Dunedin City)	3,070	2.41%
Broad Bay-Portobello	1,260	0.99%	Kaikorai-Bradford	1,235	0.97%	Royal Terrace	1,910	1.50%
Brockville	2,520	1.98%	Kenmure	2,060	1.62%	Saddle Hill-Chain Hills	1,315	1.03%
Bush Road	2,340	1.84%	Kew (Dunedin City)	1,825	1.43%	Seddon Park	3,210	2.52%
Calton Hill	1,580	1.24%	Macandrew Bay-Company Bay	1,630	1.28%	Shiel Hill	1,815	1.43%
Campus North	2,920	2.29%	Maori Hill	2,570	2.02%	South Dunedin	2,390	1.88%
Campus South	2,390	1.88%	Maryhill	2,410	1.89%	St Clair	2,450	1.92%
Campus West	2,000	1.57%	Momona	1,912	1.50%	St Kilda North	2,540	1.99%
Caversham	2,140	1.68%	Mornington	2,960	2.32%	St Kilda South	3,020	2.37%
Concord	1,540	1.21%	Mosgiel Central	2,630	2.07%	Taieri	882	0.69%
Corstorphine	2,000	1.57%	Mosgiel East	3,050	2.39%	Tainui	2,070	1.63%
Dunedin Central	2,330	1.83%	Mount Cargill	180	0.14%	Wakari	4,290	3.37%
East Taieri	2,460	1.93%	Musselburgh	1,555	1.22%	Waldronville	1,410	1.11%
Fairfield (Dunedin City)	2,670	2.10%	Normanby (Dunedin City)	1,335	1.05%	Waverley (Dunedin City)	2,780	2.18%
Fernhill	1,810	1.42%	North East Valley Chingford	1,735	1.36%	Wingatui	1,010	0.79%
Forbury	1,365	1.07%	North East Valley Knox	2,730	2.14%	<b>1. Dunedin</b>	<b>127,349</b>	<b>100.0%</b>
Gardens (Dunedin City)	4,280	3.36%	Opoho	1,310	1.03%			
Glenleith	1,385	1.09%	Otago Peninsula	890	0.70%			



# HAWKES BAY



Hawkes Bay Regions	
1	Hastings
2	Napier

# Hawkes Bay Statistical Areas

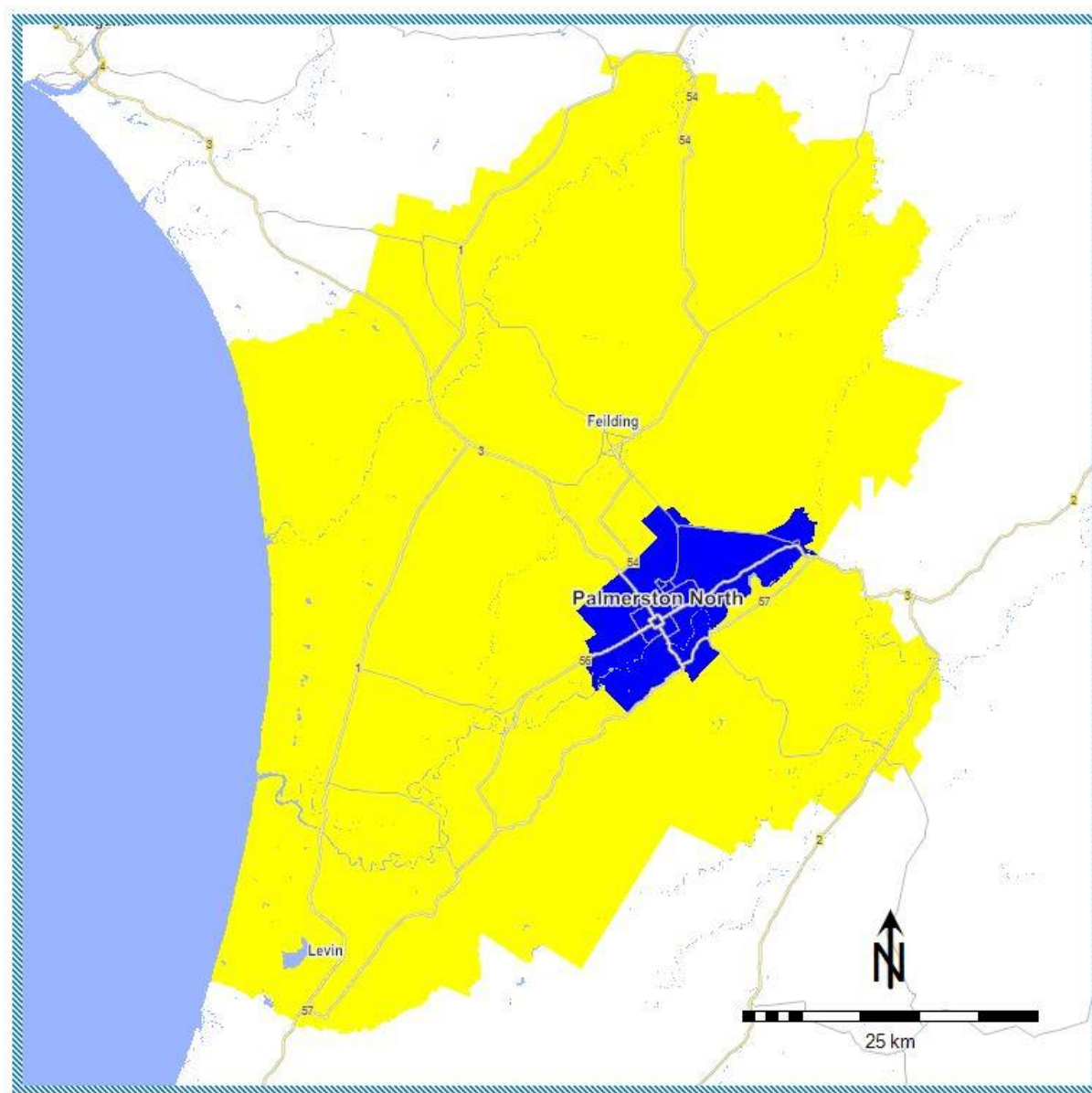


1. Hastings								
Statistical Areas	Pop. 0+	Shr 0+	Statistical Areas	Pop. 0+	Shr 0+	Statistical Areas	Pop. 0+	Shr 0+
Akina Park	2,620	1.65%	Irongate	385	0.24%	Parkvale	2,350	1.48%
Bridge Pa	1,365	0.86%	Kahuranaki	237	0.15%	Poukawa	1,530	0.97%
Brookvale	2,650	1.67%	Karamu	1,450	0.92%	Puketapu-Eskdale	223	0.14%
Camberley	2,480	1.57%	Karanema-St Hill	1,930	1.22%	Queens Square	2,240	1.41%
Clive	2,100	1.33%	Lochain Park	3,410	2.15%	Raceway Park	2,170	1.37%
Cornwall Park	3,330	2.10%	Longlands-Pukahu	2,090	1.32%	Raureka	3,600	2.27%
Flaxmere Park	2,910	1.84%	Lucknow	1,715	1.08%	Sherenden-Crownthorpe	441	0.28%
Flaxmere South	3,190	2.01%	Mahora	2,890	1.82%	St Leonards	2,970	1.87%
Flaxmere West	3,140	1.98%	Mangaonuku	404	0.26%	Te Awanga	785	0.50%
Frimley	3,700	2.34%	Mangarara	1,864	1.18%	Te Mata Hills	1,080	0.68%
Hastings Central	540	0.34%	Mangateretere	1,540	0.97%	Tomoana	370	0.23%
Haumoana	1,210	0.76%	Maraekakaho	165	0.10%	Tomoana Crossing	2,730	1.72%
Havelock Hills	1,615	1.02%	Mayfair	3,300	2.08%	Twyford	795	0.50%
Havelock North-Central	480	0.30%	Omahu Strip	320	0.20%	Waipawa	2,400	1.51%
Hereworth	3,020	1.91%	Omahu-Pakowhai	2,030	1.28%	<b>1. Hastings</b>	<b>87,803</b>	<b>55.42%</b>
Iona	2,750	1.74%	Parkhaven	3,290	2.08%			

2. Napier								
Statistical Areas	Pop. 0+	Shr 0+	Statistical Areas	Pop. 0+	Shr 0+	Statistical Areas	Pop. 0+	Shr 0+
Ahuriri	1,115	0.70%	McLean Park	2,680	1.69%	Puketapu-Eskdale	2,002	1.26%
Bay View (Napier City)	2,430	1.53%	Meeanee-Awatoto	3,320	2.10%	Tamatea East	1,865	1.18%
Bledisloe Park	2,530	1.60%	Napier Central	525	0.33%	Tamatea North	1,860	1.17%
Bluff Hill	2,770	1.75%	Nelson Park	2,300	1.45%	Tamatea West	2,160	1.36%
Greenmeadows Central	1,530	0.97%	Onekawa Central	1,685	1.06%	Taradale Central	2,510	1.58%
Greenmeadows South	2,190	1.38%	Onekawa East	1,790	1.13%	Taradale South	2,700	1.70%
Greenmeadows West	1,945	1.23%	Onekawa South	3,520	2.22%	Taradale West	1,965	1.24%
Hospital Hill	3,100	1.96%	Onekawa West	315	0.20%	Tareha Reserve	3,460	2.18%
Maraekakaho	1,063	0.67%	Pirimai East	2,460	1.55%	Westshore	1,285	0.81%
Maraenui	3,950	2.49%	Pirimai West	1,825	1.15%	<b>2. Napier</b>	<b>70,641</b>	<b>44.58%</b>
Marewa East	3,700	2.34%	Poraiti Flat	1,430	0.90%			
Marewa West	1,815	1.15%	Poraiti Hills	845	0.53%			



## MANAWATU



Manawatu Regions	
1	Palmerston North Urban
2	Rest of Manawatu

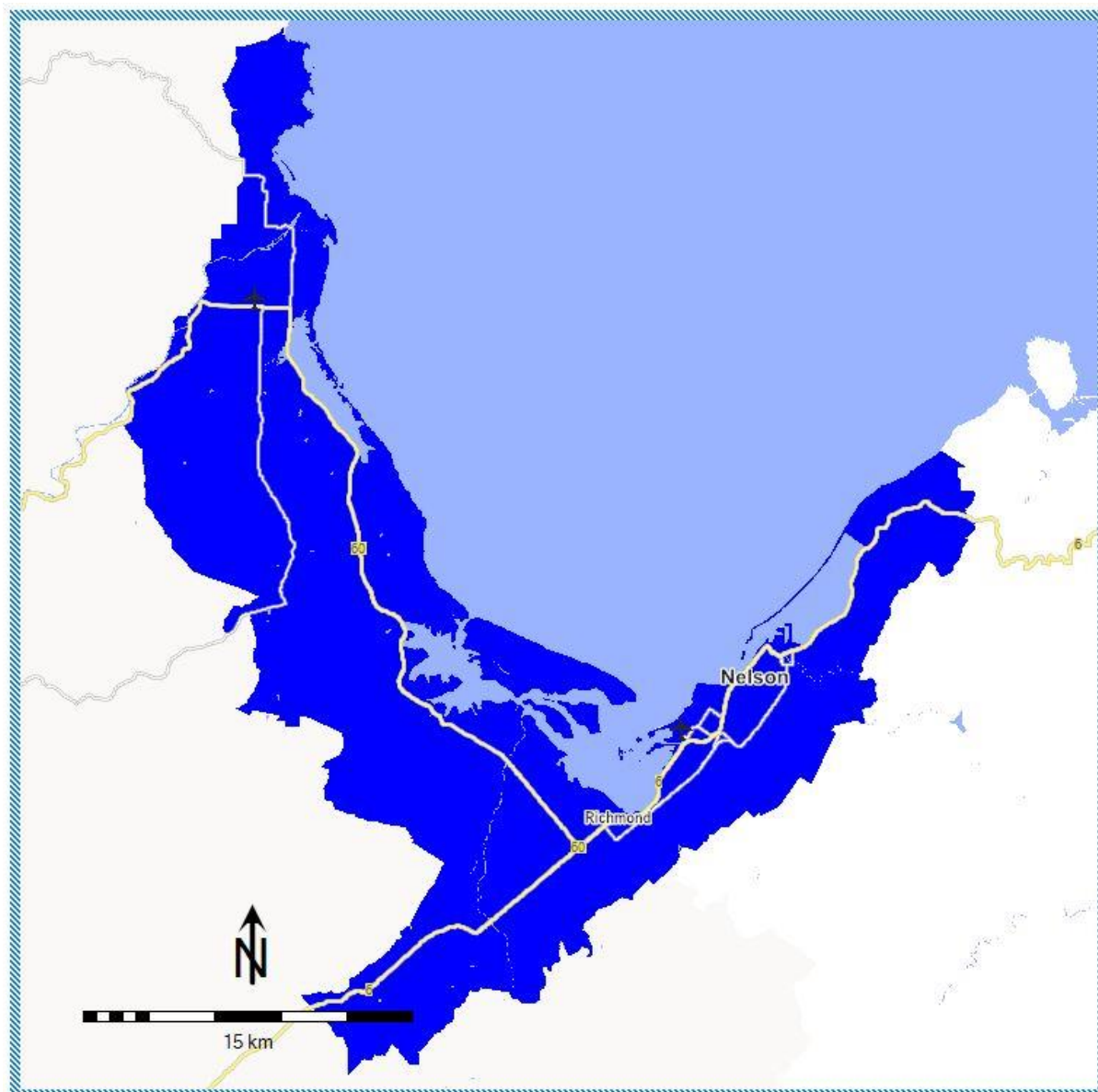
# Manawatu Statistical Areas



1. Palmerston North Urban								
Statistical Areas	Pop. 0+	Shr 0+	Statistical Areas	Pop. 0+	Shr 0+	Statistical Areas	Pop. 0+	Shr 0+
Aokautere	840	0.48%	Maraetara	1,505	0.86%	Roslyn (Palmerston North City)	2,580	1.48%
Ashhurst	3,350	1.92%	Milson North	2,660	1.53%	Royal Oak (Palmerston North City)	2,700	1.55%
Awapuni North	3,740	2.15%	Milson South	3,200	1.84%	Ruahine	1,655	0.95%
Awapuni South	3,530	2.02%	Milverton	2,190	1.26%	Ruamahanga	2,910	1.67%
Cloverlea (Palmerston North City)	1,935	1.11%	Newbury	2,010	1.15%	Takaro North	3,510	2.01%
Esplanade	2,380	1.37%	Palmerston North Airport	150	0.09%	Takaro South	2,550	1.46%
Fitzherbert	1,514	0.87%	Palmerston North Central	1,240	0.71%	Terrace End	3,820	2.19%
Highbury East	3,120	1.79%	Palmerston North Hospital	2,740	1.57%	Tremaine	560	0.32%
Hokowhitu Central	2,460	1.41%	Papaioea North	2,720	1.56%	Turitea	500	0.29%
Hokowhitu East	3,290	1.89%	Papaioea South	2,150	1.23%	West End	3,130	1.80%
Hokowhitu South	2,050	1.18%	Park West	1,945	1.12%	Westbrook	3,210	1.84%
Kelvin Grove North	2,400	1.38%	Pihauatua	133	0.08%	Whakarongo	1,810	1.04%
Kelvin Grove West	2,630	1.51%	Pioneer West	265	0.15%	<b>1. Palmerston North Urban</b>	<b>89,249</b>	<b>51.19%</b>
Linton Camp	1,816	1.04%	Poutoa	2,350	1.35%			

2. Rest Of Manawatu								
Statistical Areas	Pop. 0+	Shr 0+	Statistical Areas	Pop. 0+	Shr 0+	Statistical Areas	Pop. 0+	Shr 0+
Aokautere Rural	1,020	0.59%	Kiwitea	1,321	0.76%	Parewanui	930	0.53%
Awahuri	2,180	1.25%	Levin Central	1,155	0.66%	Pihauatua	942	0.54%
Bulls	2,180	1.25%	Linton Camp	129	0.07%	Playford Park	1,985	1.14%
Donnelly Park	1,315	0.75%	Makahika	1,075	0.62%	Pohangina-Apiti	1,122	0.64%
Fairfield (Horowhenua District)	1,525	0.87%	Makino	3,370	1.93%	Queenwood (Horowhenua District)	2,190	1.26%
Feilding Central	1,070	0.61%	Makomako	1,560	0.89%	Sandon	2,360	1.35%
Fitzherbert	386	0.22%	Mangatainoka	1,505	0.86%	Shannon	1,610	0.92%
Foxton Beach	2,160	1.24%	Marton North	3,200	1.84%	Taikorea	1,435	0.82%
Foxton North	1,490	0.85%	Marton Rural	1,028	0.59%	Taitoko	1,930	1.11%
Foxton South	1,890	1.08%	Marton South	2,450	1.41%	Taonui	1,845	1.06%
Kauwhata	2,170	1.24%	Miranui	2,020	1.16%	Tararua	1,945	1.12%
Kawiu North	1,930	1.11%	Mount Taylor	670	0.38%	Tokorangi	2,420	1.39%
Kawiu South	2,680	1.54%	Ohakea-Sanson	1,600	0.92%	Waikawa (Horowhenua District)	489	0.28%
Kere Kere	1,050	0.60%	Ohau-Manakau	511	0.29%	Waiopahu	1,575	0.90%
Kimbolton North	3,720	2.13%	Oroua Downs	1,450	0.83%	Waitarere	2,460	1.41%
Kimbolton South	2,330	1.34%	Otairi	669	0.38%	Warwick	1,540	0.88%
Kimbolton West	2,660	1.53%	Pahiatua	2,840	1.63%	<b>2. Rest Of Manawatu</b>	<b>85,085</b>	<b>48.81%</b>

## NELSON



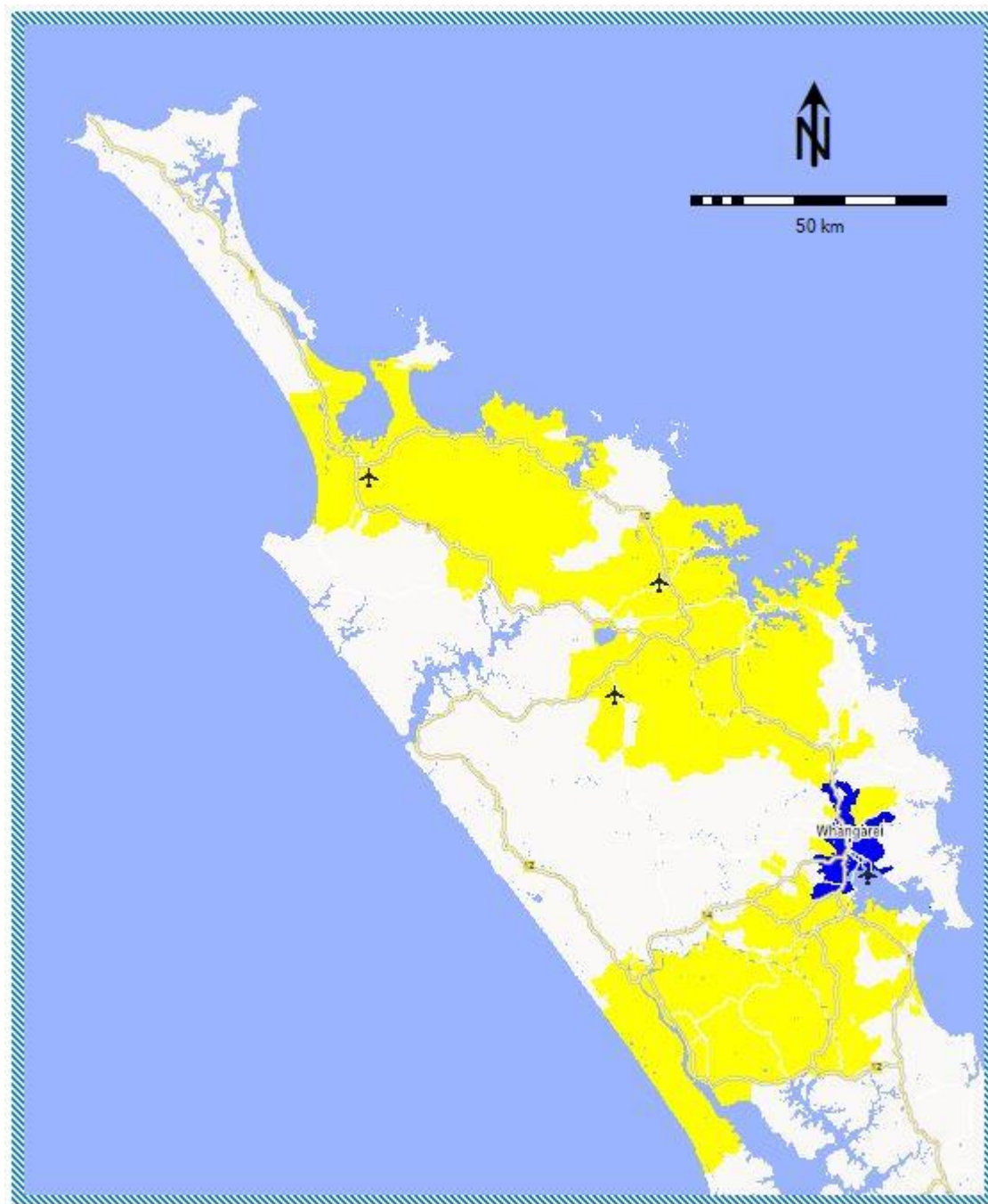
Nelson Regions	
	Nelson

# Nelson Statistical Areas



1. Nelson								
Statistical Areas	Pop. 0+	Shr 0+	Statistical Areas	Pop. 0+	Shr 0+	Statistical Areas	Pop. 0+	Shr 0+
Aldinga	3,120	3.10%	Maitlands	2,290	2.28%	Saxton	30	0.03%
Aniseed Valley	550	0.55%	Mapua	1,625	1.61%	Suffolk	2,600	2.58%
Appleby (Tasman District)	780	0.78%	Marybank	1,085	1.08%	Tahuna Hills	3,090	3.07%
Atawhai	2,970	2.95%	Motueka East	3,050	3.03%	Tahunanui	2,970	2.95%
Ben Cooper Park	2,500	2.48%	Motueka North	2,540	2.52%	Templemore	1,975	1.96%
Brightwater	2,390	2.38%	Motueka West	2,690	2.67%	The Brook	2,090	2.08%
Britannia	1,905	1.89%	Moutere Hills	2,610	2.59%	The Wood	3,080	3.06%
Broadgreen-Monaco	2,500	2.48%	Nayland	2,270	2.26%	Toi Toi	1,870	1.86%
Daelyn	1,595	1.59%	Nelson Airport	90	0.09%	Upper Moutere	333	0.33%
Easby Park	2,950	2.93%	Nelson Central-Trafalgar	850	0.84%	Victory	1,730	1.72%
Enner Glynn	3,040	3.02%	Nelson Rural	1,590	1.58%	Waimea Inlet	1,035	1.03%
Fairose	1,825	1.81%	Omaio	4,010	3.98%	Waimea West	1,235	1.23%
Grampians	2,710	2.69%	Port Nelson	105	0.10%	Wakefield	2,486	2.47%
Hope	935	0.93%	Richmond Central (Tasman District)	1,935	1.92%	Wakefield Rural	354	0.35%
Islands Tasman District	95	0.09%	Richmond South (Tasman District)	1,040	1.03%	Washington	3,200	3.18%
Kaiteriteri-Riwaka	1,970	1.96%	Richmond West (Tasman District)	2,970	2.95%	Wilkes Park	2,370	2.36%
Lower Moutere	1,935	1.92%	Ruby Bay	1,490	1.48%	<b>1. Nelson</b>	<b>100,629</b>	<b>100.0%</b>
Maitai	1,450	1.44%	Rutherford	2,720	2.70%			

# NORTHLAND



Northland Regions	
1	Whangarei Urban
2	Rest of Northland



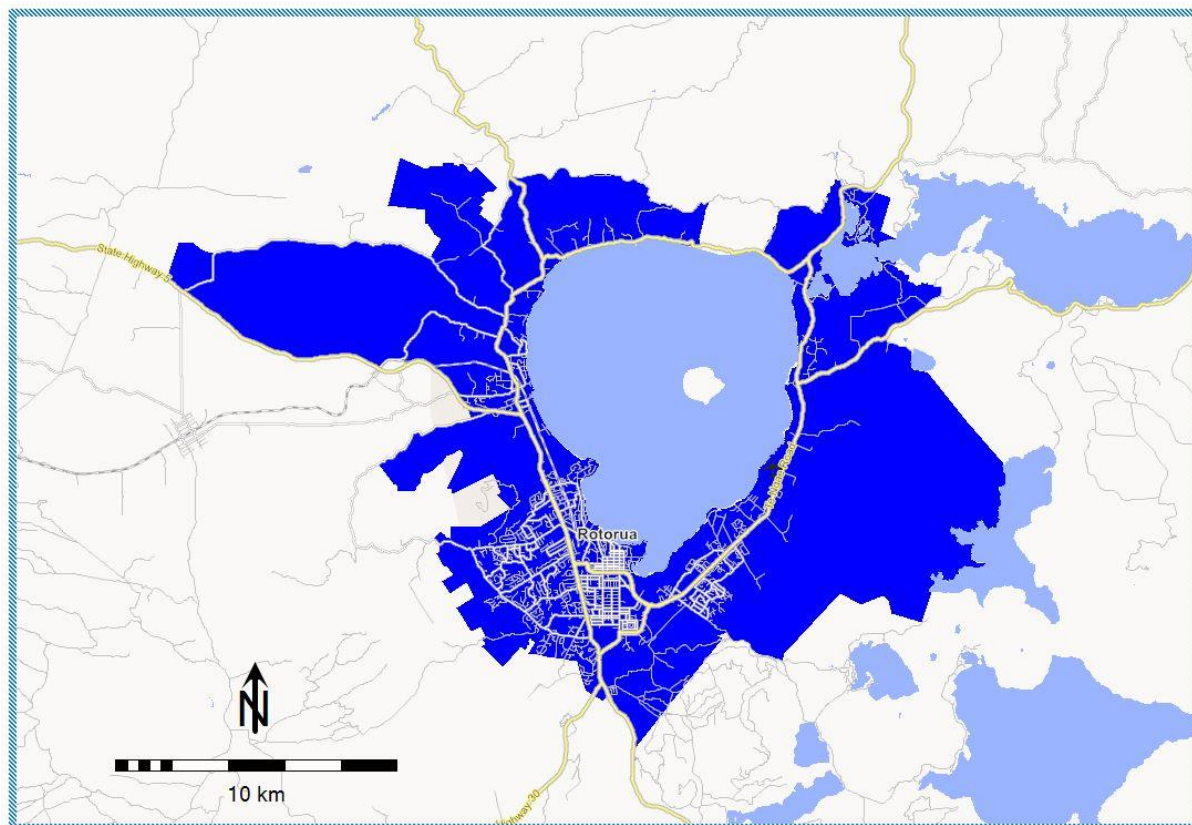
# Northland Statistical Areas



1. Whangarei Urban								
Statistical Areas	Pop. 0+	Shr 0+	Statistical Areas	Pop. 0+	Shr 0+	Statistical Areas	Pop. 0+	Shr 0+
Abbey Caves-Glenbervie	1,289	0.90%	Matarau	110	0.08%	Riverside	2,290	1.61%
Granfield Reserve	3,510	2.46%	Maunu	2,700	1.90%	Sherwood Rise	2,630	1.85%
Hikurangi	316	0.22%	Morningside (Whangarei District)	2,650	1.86%	Tarewa	2,280	1.60%
Horahora	1,785	1.25%	Onerahi	2,600	1.83%	Tikipunga North	3,800	2.67%
Kamo Central	1,820	1.28%	Onerahi Park	1,670	1.17%	Tikipunga South	4,140	2.91%
Kamo East	3,370	2.37%	Otaika-Portland	1,520	1.07%	Whangarei Central	975	0.68%
Kamo West	2,260	1.59%	Otangarei	2,350	1.65%	Whau Valley	2,930	2.06%
Kauri	1,633	1.15%	Parua Bay	417	0.29%	Woodhill-Vinetown	3,110	2.18%
Kensington (Whangarei District)	3,400	2.39%	Port-Limeburners	235	0.17%	<b>1. Whangarei Urban</b>	<b>63,353</b>	<b>44.49%</b>
Kiripaka	412	0.29%	Pukenui	861	0.60%			
Mairtown	2,580	1.81%	Raumanga	3,710	2.61%			

2. Rest Of Northland								
Statistical Areas	Pop. 0+	Shr 0+	Statistical Areas	Pop. 0+	Shr 0+	Statistical Areas	Pop. 0+	Shr 0+
Abbey Caves-Glenbervie	181	0.13%	Matarau	110	0.08%	Puketotara	2,020	1.42%
Bream Bay	314	0.22%	Mataraua Forest	585	0.41%	Rangaunu Harbour	2,710	1.90%
Dargaville	5,140	3.61%	Matawaia-Taumarere	1,485	1.04%	Rangitane-Purerua	1,378	0.97%
Doubtless Bay	2,660	1.87%	Maungaru	1,407	0.99%	Rangitahi	1,040	0.73%
Haruru	1,220	0.86%	Maungatapere	937	0.66%	Riverview	2,730	1.92%
Kao	208	0.15%	Maungaturoto	96	0.07%	Ruakaka	916	0.64%
Kaikohe	4,950	3.48%	Moerewa	2,080	1.46%	Ruawai-Matakohe	2,467	1.73%
Kaipara Coastal	2,353	1.65%	Ngapuhi	2,030	1.43%	Russell	785	0.55%
Kaitia East	2,720	1.91%	Oakleigh-Mangapai	2,520	1.77%	Russell Forest-Rawhiti	800	0.56%
Kaitia West	3,670	2.58%	Ohaeawai-Waimate North	1,325	0.93%	Russell Peninsula	710	0.50%
Karikeri Peninsula	1,405	0.99%	Okaihau	375	0.26%	Taemaro-Oraititi	1,095	0.77%
Kauri	142	0.10%	Omahuta Forest-Horeke	160	0.11%	Tangonge	935	0.66%
Kawakawa	1,670	1.17%	Opua (Far North District)	1,295	0.91%	Waipapa	945	0.66%
Kerikeri Central	2,780	1.95%	Oruru-Parapara	1,010	0.71%	Waipu	1,166	0.82%
Kerikeri South	2,820	1.98%	Otamatea (Kaipara District)	1,214	0.85%	Whakapaku	800	0.56%
Kiripaka	360	0.25%	Paihia	1,725	1.21%	Whangaruru	310	0.22%
Lake Manuwai-Kapiro	2,420	1.70%	Pakaraka	770	0.54%	<b>2. Rest Of Northland</b>	<b>79,056</b>	<b>55.51%</b>
Mangakahia-Hukerenui	337	0.24%	Peria	1,275	0.90%			
Maromaku	885	0.62%	Puketona-Waitangi	1,615	1.13%			

## ROTORUA



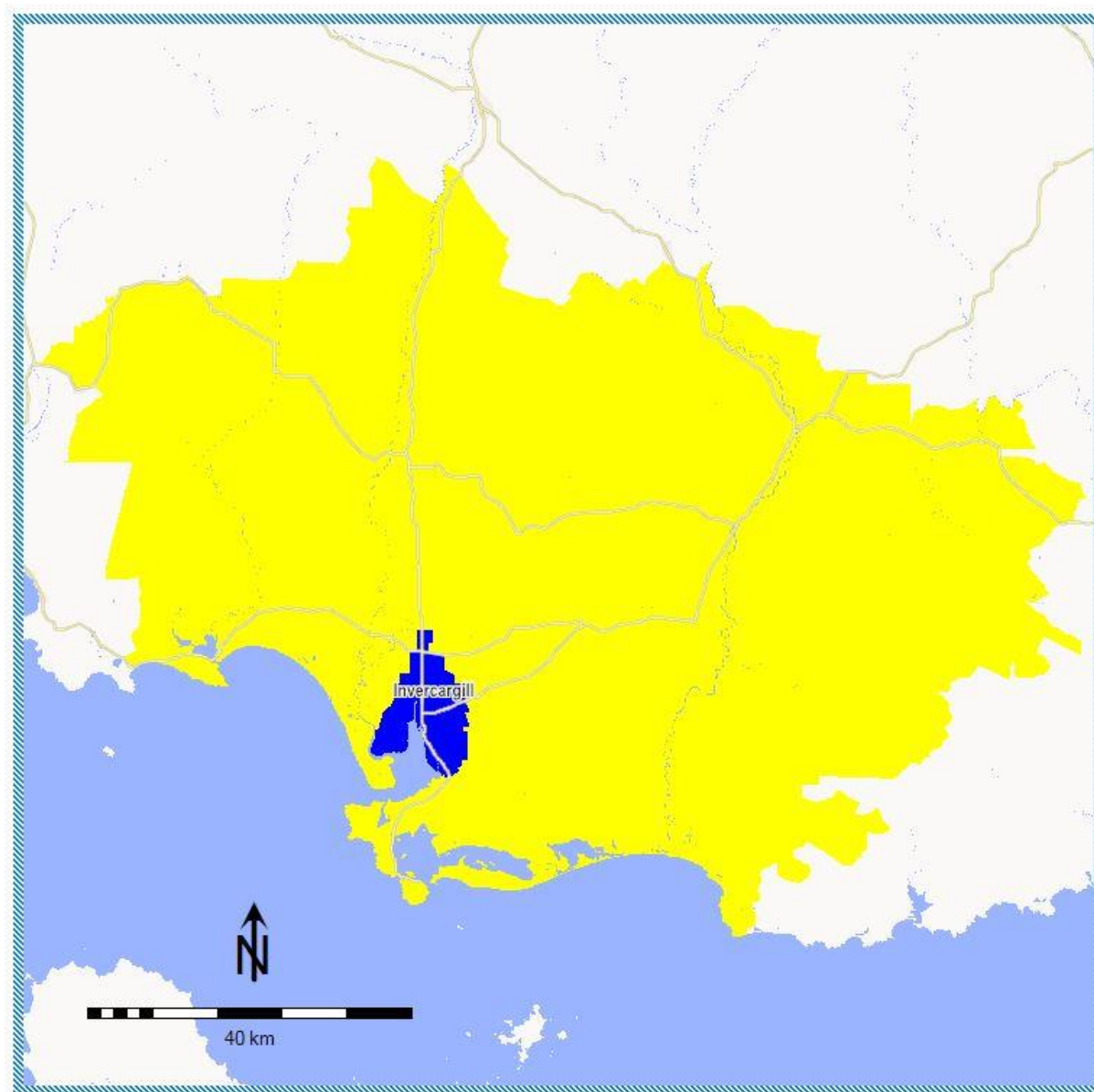
Rotorua Regions	
	Rotorua

# Rotorua Statistical Area

1. Rotorua								
Statistical Areas	Pop. 0+	Shr 0+	Statistical Areas	Pop. 0+	Shr 0+	Statistical Areas	Pop. 0+	Shr 0+
Fairy Springs	1,980	2.90%	Mangakakahi West	2,360	3.46%	Selwyn Heights	1,190	1.74%
Fenton Park	1,915	2.81%	Ngapuna	390	0.57%	Springfield North	1,775	2.60%
Fordlands	2,790	4.09%	Ngongotaha East	2,000	2.93%	Springfield South	2,030	2.97%
Glenholme North	2,990	4.38%	Ngongotaha South	1,510	2.21%	Sunnybrook	2,220	3.25%
Glenholme South	2,060	3.02%	Ngongotaha West	1,725	2.53%	Tihiotonga-Whakarewarewa	880	1.29%
Hamurana	1,135	1.66%	Owhata East	3,250	4.76%	Tui Ridge	1,079	1.58%
Hillcrest (Rotorua District)	2,100	3.08%	Owhata West	3,370	4.94%	Utuhina	1,615	2.37%
Holdens Bay-Rotokawa	1,305	1.91%	Pleasant Heights	2,210	3.24%	Victoria	2,470	3.62%
Kawaha	2,000	2.93%	Pomare	1,870	2.74%	Waiohewa	1,145	1.68%
Koutu	2,270	3.33%	Pukehangi North	2,930	4.29%	Western Heights (Rotorua District)	2,620	3.84%
Kuirau	1,300	1.90%	Pukehangi South	2,650	3.88%	<b>1. Rotorua</b>	<b>68,266</b>	<b>100.0%</b>
Lynmore	3,520	5.16%	Rotoiti-Rotoehu	847	1.24%			
Mangakakahi Central	160	0.23%	Rotorua Central	605	0.89%			



## SOUTHLAND



Southland Regions	
1	Invercargill Urban
2	Rest of Southland

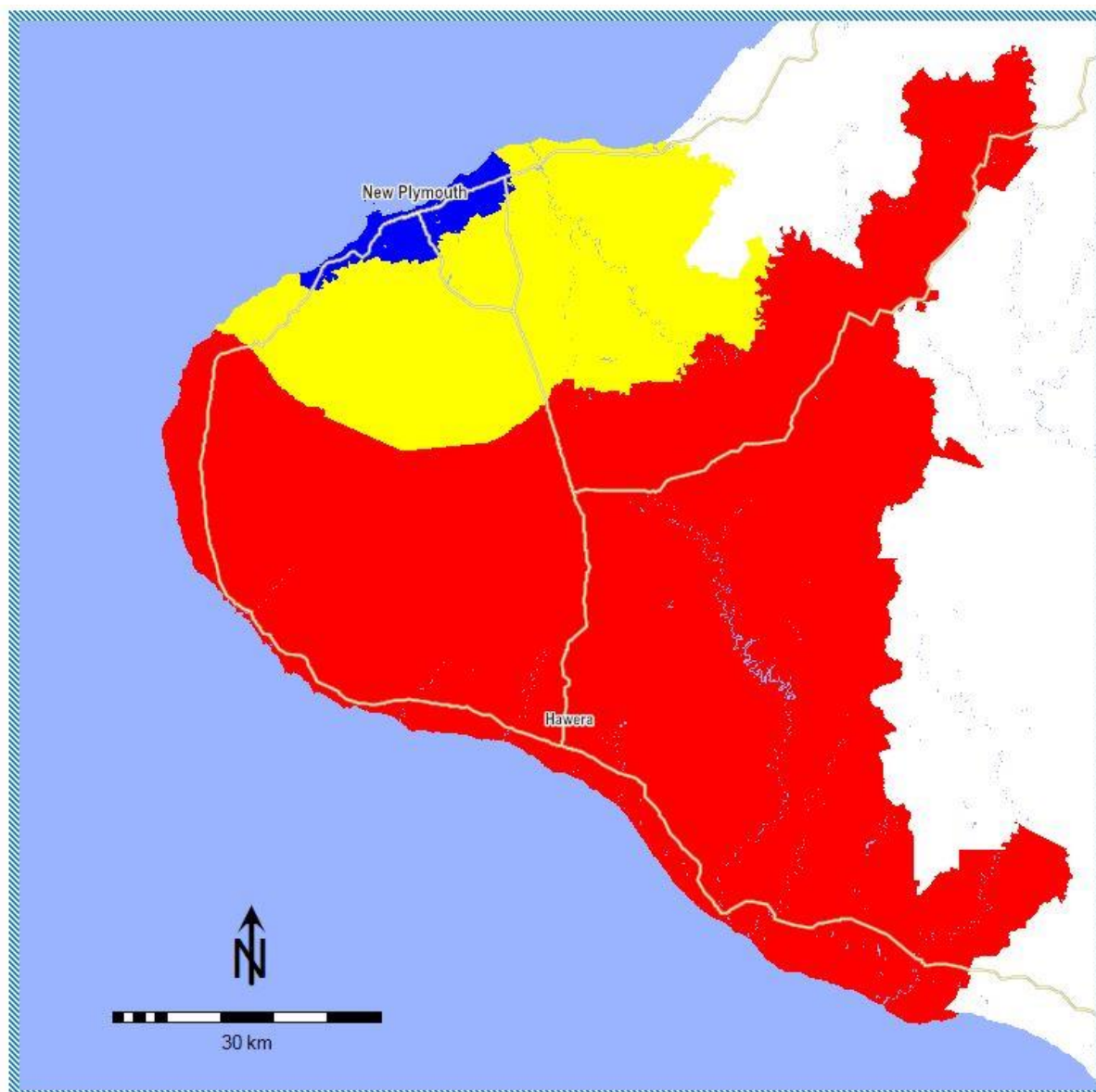
# Southland Statistical Areas



1. Invercargill Urban								
Statistical Areas	Pop. 0+	Shr 0+	Statistical Areas	Pop. 0+	Shr 0+	Statistical Areas	Pop. 0+	Shr 0+
Appleby North (Invercargill City)	2,020	2.17%	Kennington-Tisbury	1,148	1.23%	Strathern	4,170	4.49%
Appleby South (Invercargill City)	1,820	1.96%	Kingswell	2,400	2.58%	Turnbull Thompson Park	1,860	2.00%
Avenal	1,380	1.48%	Myross Bush	479	0.52%	Waikiwi	3,390	3.65%
Clifton-Kew	1,950	2.10%	Newfield	2,170	2.33%	Waverley (Invercargill City)	1,900	2.04%
Georgetown	2,250	2.42%	Otatara	3,270	3.52%	West Plains-Makarewa	1,298	1.40%
Gladstone (Invercargill City)	2,510	2.70%	Prestonville-Grasmere	3,200	3.44%	Windsor	3,410	3.67%
Glengarry	3,500	3.76%	Richmond (Invercargill City)	2,950	3.17%	Woodend-Greenhills	138	0.15%
Heidelberg	2,250	2.42%	Rockdale	950	1.02%	<b>1. Invercargill Urban</b>	<b>54,097</b>	<b>58.19%</b>
Invercargill Central	1,505	1.62%	Rosedale-Hargest	2,180	2.35%			

2. Rest Of Southland								
Statistical Areas	Pop. 0+	Shr 0+	Statistical Areas	Pop. 0+	Shr 0+	Statistical Areas	Pop. 0+	Shr 0+
Awarua Plains	1,115	1.20%	Hedgehope	1,220	1.31%	Waianiwa	1,235	1.33%
Bluff	1,830	1.97%	Kennington-Tisbury	322	0.35%	Waikaka	1,095	1.18%
Clinton	913	0.98%	Longwood Forest	193	0.21%	Waimumu-Kaiwera	1,405	1.51%
East Gore	1,575	1.69%	Mataura	1,740	1.87%	Wallacetown	1,245	1.34%
Edendale-Woodlands	2,430	2.61%	Myross Bush	631	0.68%	West Plains-Makarewa	462	0.50%
Gore Central	195	0.21%	Ohai-Nightcaps	1,387	1.49%	Winton	2,460	2.65%
Gore Main	1,175	1.26%	Oreti River	2,150	2.31%	Woodend-Greenhills	532	0.57%
Gore North	1,780	1.91%	Otatara	130	0.14%	Wyndham-Catlins	2,066	2.22%
Gore South	670	0.72%	Otautau	2,960	3.18%	<b>2. Rest Of Southland</b>	<b>38,867</b>	<b>41.81%</b>
Gore West	2,860	3.08%	Riversdale-Piano Flat	204	0.22%			
Grove Bush	1,255	1.35%	Riverton	1,630	1.75%			

## TARANAKI



Taranaki Regions	
1	New Plymouth Urban
2	North Taranaki
3	South Taranaki

# Taranaki Statistical Areas



## 1. New Plymouth Urban

Statistical Areas	Pop. 0+	Shr 0+	Statistical Areas	Pop. 0+	Shr 0+	Statistical Areas	Pop. 0+	Shr 0+
Bell Block Central	3,050	2.39%	Kawaroa	2,590	2.03%	Port Taranaki	50	0.04%
Bell Block East-Puketapu	1,545	1.21%	Lepperton-Brixton	221	0.17%	Spotswood	3,980	3.11%
Bell Block West	3,650	2.86%	Lower Vogeltown	3,090	2.42%	Strandon	2,650	2.07%
Blagdon-Lynmouth	2,740	2.14%	Marfell	1,990	1.56%	Upper Vogeltown	2,990	2.34%
Ferndale	879	0.69%	Merrilands	3,100	2.43%	Waiwhakaiho-Bell Block South	225	0.18%
Fitzroy (New Plymouth District)	2,230	1.74%	Moturoa	1,985	1.55%	Welbourn	3,520	2.75%
Frankleigh Park	3,530	2.76%	New Plymouth Central	1,235	0.97%	Westown	4,760	3.72%
Glen Avon	1,350	1.06%	Oakura	1,730	1.35%	Whalers Gate	2,550	2.00%
Highlands Park (New Plymouth District)	3,280	2.57%	Omata	560	0.44%	<b>1. New Plymouth Urban</b>	<b>63,020</b>	<b>49.31%</b>
Hurdon	2,550	2.00%	Paraite	990	0.77%			

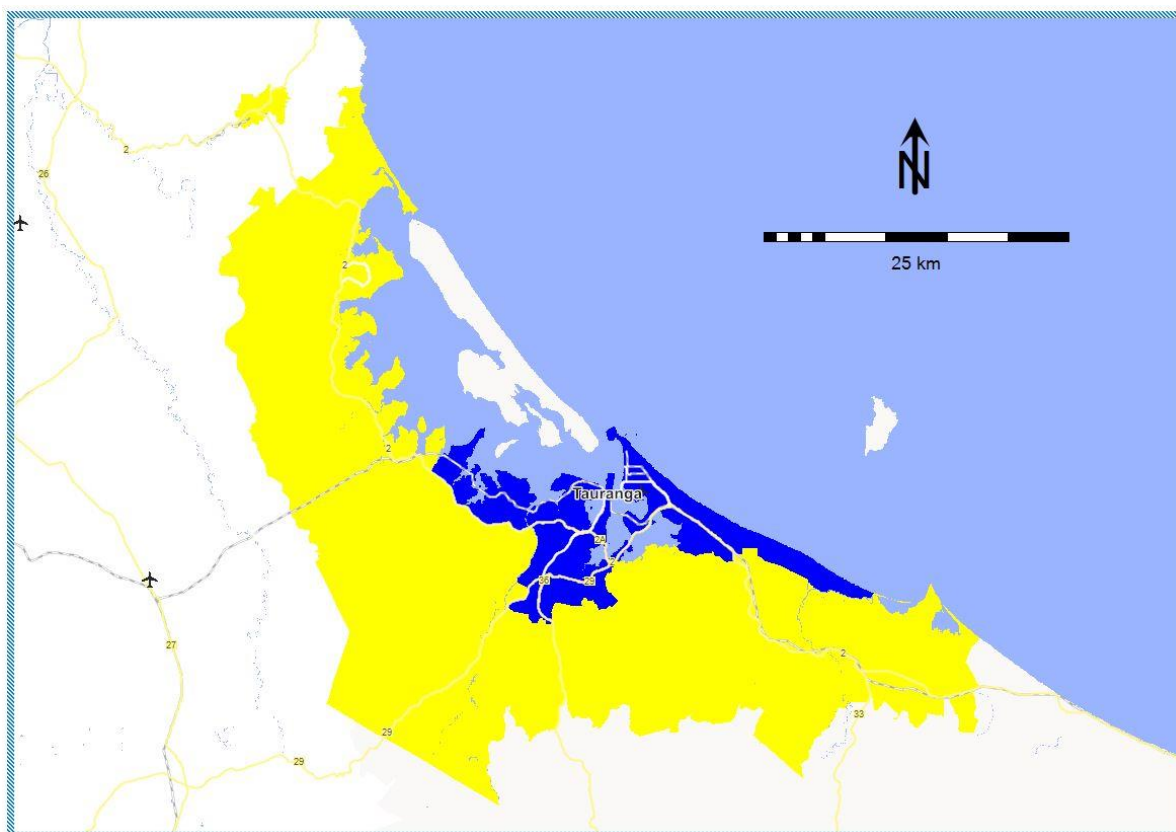
## 2. North Taranaki

Statistical Areas	Pop. 0+	Shr 0+	Statistical Areas	Pop. 0+	Shr 0+	Statistical Areas	Pop. 0+	Shr 0+
Everett Park	2,440	1.91%	Lepperton-Brixton	1,709	1.34%	Tikorangi	2,030	1.59%
Ferndale	106	0.08%	Mangaoraka	2,090	1.64%	Waitara East	3,310	2.59%
Inglewood	3,880	3.04%	Mangorei	2,240	1.75%	Waitara West	4,280	3.35%
Kaitake	2,320	1.82%	Tarata	640	0.50%	<b>2. North Taranaki</b>	<b>25,045</b>	<b>19.60%</b>

## 3. South Taranaki

Statistical Areas	Pop. 0+	Shr 0+	Statistical Areas	Pop. 0+	Shr 0+	Statistical Areas	Pop. 0+	Shr 0+
Douglas	725	0.57%	Normanby (South Taranaki District)	1,120	0.88%	Stratford South	1,940	1.52%
Eltham	2,080	1.63%	Ohangai	620	0.49%	Taungatara	1,445	1.13%
Hawera Central	2,700	2.11%	Okaiawa	1,285	1.01%	Tawhiti	805	0.63%
Hawera West	1,920	1.50%	Opunake	1,410	1.10%	Te Roti-Moeroa	805	0.63%
Kaponga-Mangatoki	1,420	1.11%	Parihaka	2,360	1.85%	Toko	1,355	1.06%
Kapuni	615	0.48%	Patea	1,265	0.99%	Turuturu	2,050	1.60%
King Edward Park	1,560	1.22%	Pembroke	1,750	1.37%	Whangamomona	135	0.11%
Manaia	1,005	0.79%	Ramanui	2,160	1.69%	<b>3. South Taranaki</b>	<b>39,745</b>	<b>31.10%</b>
Mangawhio	765	0.60%	Stratford Central	2,190	1.71%			
Manutahi-Waitotora	2,080	1.63%	Stratford North	2,180	1.71%			

## TAURANGA



Tauranga Regions	
1	Tauranga Urban
2	Rest of Tauranga

# Tauranga Statistical Areas

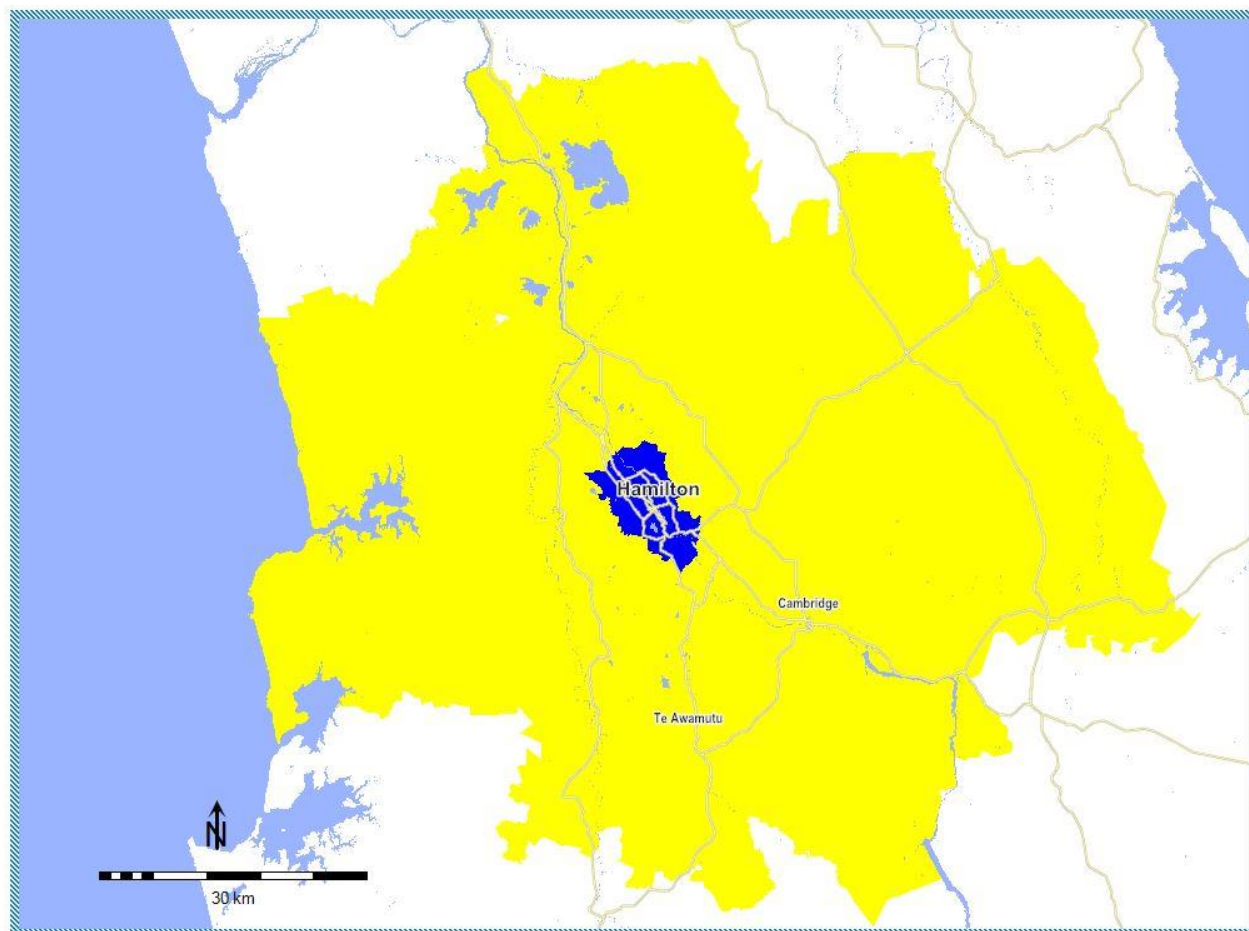


1. Tauranga Urban								
Statistical Areas	Pop. 0+	Shr 0+	Statistical Areas	Pop. 0+	Shr 0+	Statistical Areas	Pop. 0+	Shr 0+
Arataki North	3,380	1.52%	Maungatapu	3,160	1.42%	Pyes Pa East	740	0.33%
Arataki South	3,420	1.54%	Motiti	3,780	1.70%	Pyes Pa North	3,990	1.79%
Baypark-Kairua	900	0.40%	Mount Maunganui Central	410	0.18%	Pyes Pa North West	3,170	1.42%
Bellevue	4,260	1.91%	Mount Maunganui North	3,760	1.69%	Pyes Pa South	2,900	1.30%
Bethlehem Central	4,560	2.05%	Mount Maunganui South	3,290	1.48%	Pyes Pa West	3,880	1.74%
Bethlehem North	3,500	1.57%	Ohauti	3,890	1.75%	Tauranga Central	2,853	1.28%
Bethlehem South	1,170	0.53%	Omanu Beach	3,310	1.49%	Tauranga Hospital	2,280	1.02%
Brookfield East	3,170	1.42%	Omokoroa North	4,040	1.82%	Tauranga South	4,220	1.90%
Brookfield West	3,310	1.49%	Omokoroa South	725	0.33%	Tauriko	256	0.12%
Doncaster	3,610	1.62%	Otumoetai East	3,920	1.76%	Te Maunga North	3,460	1.55%
Fraser Cove	1,305	0.59%	Otumoetai North	2,310	1.04%	Te Maunga South	2,310	1.04%
Gate Pa	4,310	1.94%	Otumoetai South	2,540	1.14%	Te Puna	3,710	1.67%
Greerton North	3,880	1.74%	Pacific Lakes	2,990	1.34%	Te Reti	2,030	0.91%
Greerton South	725	0.33%	Pacific View	3,310	1.49%	Wairakei Central	1,535	0.69%
Hairini	3,580	1.61%	Palm Beach North	3,630	1.63%	Wairakei East-Te Tumu	4,220	1.90%
Judea	3,080	1.38%	Palm Beach South-Gravatt	3,960	1.78%	Wairakei West	2,480	1.11%
Matapihi	845	0.38%	Papamoa Beach North	3,130	1.41%	Yatton Park	3,010	1.35%
Matua North	3,050	1.37%	Papamoa Beach South	3,090	1.39%	<b>1. Tauranga Urban</b>	<b>157,930</b>	<b>70.96%</b>
Matua South	2,610	1.17%	Poike	975	0.44%			

2. Rest Of Tauranga								
Statistical Areas	Pop. 0+	Shr 0+	Statistical Areas	Pop. 0+	Shr 0+	Statistical Areas	Pop. 0+	Shr 0+
Aongatete	3,540	1.59%	Pahoia East	2,170	0.97%	Waihi Beach-Bowentown	2,760	1.24%
Athenree	925	0.42%	Pahoia West	1,465	0.66%	Waihi East	1,375	0.62%
Kaimai	1,986	0.89%	Pongakawa	1,121	0.50%	Waihi North	1,865	0.84%
Kaitemako	1,650	0.74%	Pukehina Beach	590	0.27%	Waihi South	2,520	1.13%
Katikati North	2,800	1.26%	Rangiuru	2,666	1.20%	Waiorohi	2,112	0.95%
Katikati South	2,980	1.34%	Tahawai	2,030	0.91%	Waitao	2,110	0.95%
Keenan Road	255	0.11%	Tauriko	124	0.06%	Welcome Bay East	2,850	1.28%
Kopurererua	865	0.39%	Te Puke East	3,120	1.40%	Welcome Bay South	4,160	1.87%
Maketu	1,460	0.66%	Te Puke South	2,930	1.32%	Welcome Bay West	3,150	1.42%
Minden	2,660	1.20%	Te Puke West	4,180	1.88%	<b>2. Rest Of Tauranga</b>	<b>64,644</b>	<b>29.04%</b>
Otawa	1,839	0.83%	Waiau	385	0.17%			



## WAIKATO



Waikato Regions	
1	Hamilton City
2	Rest of Waikato

1. Hamilton City								
Statistical Areas	Pop. 0+	Shr 0+	Statistical Areas	Pop. 0+	Shr 0+	Statistical Areas	Pop. 0+	Shr 0+
Bader	2,880	0.84%	Glenview	2,580	0.75%	Porritt	2,930	0.85%
Beerescourt	2,360	0.69%	Greensboro	4,760	1.38%	Pukete East	2,510	0.73%
Burbush-Baverstock	861	0.25%	Hamilton Central	735	0.21%	Pukete West	2,470	0.72%
Chartwell	2,730	0.79%	Hamilton East	4,220	1.23%	Queenwood (Hamilton City)	2,550	0.74%
Chedworth	1,980	0.57%	Hamilton East Cook	2,340	0.68%	Resthill	2,720	0.79%
Claudelands	3,300	0.96%	Hamilton East Village	3,710	1.08%	Riverlea	2,890	0.84%
Crawshaw	3,570	1.04%	Hamilton Lake North	2,650	0.77%	Rototuna East	2,630	0.76%
Deanwell	2,290	0.66%	Hamilton Lake South	2,120	0.62%	Rototuna North	2,470	0.72%
Dinsdale North	4,120	1.20%	Hamilton West	1,340	0.39%	Rototuna South East	2,370	0.69%
Dinsdale South	4,250	1.23%	Hillcrest East (Hamilton City)	3,620	1.05%	Rototuna South West	2,330	0.68%
Enderley North	2,740	0.80%	Hillcrest West (Hamilton City)	3,260	0.95%	Rototuna West	2,990	0.87%
Enderley South	3,080	0.89%	Huntington	2,640	0.77%	Saint Andrews East	2,550	0.74%
Fairfield North (Hamilton City)	2,460	0.71%	Kahikatea	3,880	1.13%	Saint Andrews West	3,060	0.89%
Fairfield South (Hamilton City)	2,390	0.69%	Kirikiriroa	1,145	0.33%	Silverdale (Hamilton City)	2,410	0.70%
Fairview Downs	3,580	1.04%	Maeroa	4,120	1.20%	St James	2,160	0.63%
Fitzroy (Hamilton City)	3,380	0.98%	Melville North	3,360	0.98%	Swarbrick	3,420	0.99%
Flagstaff East	4,090	1.19%	Melville South	2,780	0.81%	Te Manatu	4,460	1.30%
Flagstaff North East	3,430	1.00%	Miropiko	3,340	0.97%	Te Rapa North	175	0.05%
Flagstaff North West	1,865	0.54%	Nawton East	4,560	1.32%	Te Rapa South	315	0.09%
Flagstaff South	3,680	1.07%	Nawton West	3,890	1.13%	Western Heights (Hamilton City)	3,250	0.94%
Forest Lake (Hamilton City)	2,690	0.78%	Peachgrove	3,800	1.10%	Whitiora	2,770	0.80%
Frankton Junction	855	0.25%	Peacocke	410	0.12%	<b>1. Hamilton City</b>	<b>181,271</b>	<b>52.64%</b>

2. Rest Of Waikato								
Statistical Areas	Pop. 0+	Shr 0+	Statistical Areas	Pop. 0+	Shr 0+	Statistical Areas	Pop. 0+	Shr 0+
Burbush-Baverstock	149	0.04%	Leamington West	1,620	0.47%	Tamahere South	2,250	0.65%
Cambridge Central	935	0.27%	Matamata East	2,290	0.66%	Tamahere West	1,880	0.55%
Cambridge East	3,020	0.88%	Matamata North	3,460	1.00%	Tatuanui	1,216	0.35%
Cambridge North	2,800	0.81%	Matamata West	3,340	0.97%	Taupiri-Lake Kainui	2,220	0.64%
Cambridge Park-River Garden	1,590	0.46%	Maungatautari	945	0.27%	Te Akau	1,740	0.51%
Cambridge West	2,640	0.77%	Morrinsville East	4,100	1.19%	Te Aroha East	2,640	0.77%
Eureka-Tauwhare	2,310	0.67%	Morrinsville North	1,500	0.44%	Te Aroha West	2,030	0.59%
Fencourt	800	0.23%	Morrinsville West	3,330	0.97%	Te Awamutu Central	420	0.12%
Fraser Street	1,520	0.44%	Ngahinapouri	1,895	0.55%	Te Awamutu North	1,265	0.37%
Goodfellow Park	1,920	0.56%	Ngaruawahia Central	3,510	1.02%	Te Awamutu Stadium	1,920	0.56%



2. Rest Of Waikato								
Statistical Areas	Pop. 0+	Shr 0+	Statistical Areas	Pop. 0+	Shr 0+	Statistical Areas	Pop. 0+	Shr 0+
Greenhill Park	1,390	0.40%	Ngaruawahia North	2,430	0.71%	Te Awamutu West	1,455	0.42%
Hamilton Park	1,780	0.52%	Ngaruawahia South	2,190	0.64%	Te Kauwhata East	1,895	0.55%
Hautapu	620	0.18%	Oaklands-St Kilda	1,875	0.54%	Te Kauwhata West	1,075	0.31%
Hautapu Rural	760	0.22%	Okauia	1,175	0.34%	Te Kowhai	2,250	0.65%
Hinuera	1,200	0.35%	Pekerau	3,310	0.96%	Te Pahu	1,605	0.47%
Horotiu	740	0.21%	Pirongia	1,365	0.40%	Te Poi	900	0.26%
Horsham Downs	795	0.23%	Pokuru	1,685	0.49%	Te Rahu	950	0.28%
Huntly East	3,590	1.04%	Pukemoremore	2,650	0.77%	Te Uku	2,050	0.60%
Huntly Rural	2,370	0.69%	Pukerimu	1,035	0.30%	Temple View	1,285	0.37%
Huntly South	1,780	0.52%	Raglan	3,890	1.13%	Tokanui	470	0.14%
Huntly West	3,480	1.01%	Richmond Downs-Wardville	1,385	0.40%	Waerenga	975	0.28%
Kainui-Gordonton	1,955	0.57%	Rotokauri	1,125	0.33%	Waharoa-Peria	1,465	0.43%
Kaipaki	1,785	0.52%	Rotongata	920	0.27%	Waihou-Manawaru	1,255	0.36%
Karapiro	2,700	0.78%	Rotoorangi	1,935	0.56%	Waitoa-Ngarua	1,235	0.36%
Kihikihi Central	2,850	0.83%	Ruakura	1,205	0.35%	Whale Bay	1,135	0.33%
Lake Cameron	1,730	0.50%	Sherwin Park	2,210	0.64%	Whangamarino	1,515	0.44%
Lake Ngaroto	1,355	0.39%	St Leger	525	0.15%	Whatawhata East	3,170	0.92%
Leamington Central	2,650	0.77%	Tahuna-Mangateparu	1,315	0.38%	Whatawhata West	615	0.18%
Leamington East	2,170	0.63%	Tahuroa	1,730	0.50%	Whitikahu	2,250	0.65%
Leamington South	1,935	0.56%	Tamahere North	2,720	0.79%	<b>2. Rest Of Waikato</b>	<b>163,115</b>	<b>47.36%</b>

# POPULATION POTENTIALS



		Auckland	Wellington	Christchurch	Major Markets	Total NZ
<b>Min. Sample Size</b>		<b>2,400</b>	<b>1,500</b>	<b>1,500</b>	<b>13,400</b>	<b>14,200</b>
People	10+	1,506,000	392,000	518,600	3,803,500	4,659,500
	10-19	222,000	55,900	70,900	559,200	681,700
	20-24	113,000	37,300	39,000	286,000	344,600
	25-39	420,000	106,300	131,100	969,100	1,175,800
	40-54	332,000	86,600	111,100	813,400	994,000
	55-64	189,000	49,800	70,900	503,100	622,400
	65+	230,000	56,100	95,600	672,700	841,000
Men	10+	745,000	191,200	257,900	1,875,300	2,299,100
	10-19	114,000	28,000	36,700	285,900	348,600
	20-24	58,000	17,600	20,700	146,600	177,100
	25-39	210,000	52,500	67,300	487,500	592,400
	40-54	165,000	42,800	54,600	401,000	490,100
	55-64	92,000	24,400	34,500	243,200	300,800
	65+	106,000	25,900	44,100	311,100	390,100
Women	10+	761,000	200,800	260,700	1,928,200	2,360,400
	10-19	108,000	27,900	34,200	273,300	333,100
	20-24	55,000	19,700	18,300	139,400	167,500
	25-39	210,000	53,800	63,800	481,600	583,400
	40-54	167,000	43,800	56,500	412,400	503,900
	55-64	97,000	25,400	36,400	259,900	321,600
	65+	124,000	30,200	51,500	361,600	450,900
Regions	Region 1	444,000	53,900	518,600	-	-
	Region 2	126,000	38,800		-	-
	Region 3	319,000	100,000		-	-
	Region 4	384,000	199,300		-	-
	Region 5	233,000			-	-

# POPULATION POTENTIALS



		Dunedin	Hawkes Bay	Manawatu	Nelson	Northland
Min. Sample Size		800	800	800	800	800
People	10+	118,300	140,600	154,200	92,400	125,400
	10-19	19,400	21,200	23,400	12,400	18,800
	20-24	13,700	8,500	11,900	5,300	7,100
	25-39	25,000	30,700	35,000	17,700	26,000
	40-54	22,300	29,200	29,800	19,700	24,000
	55-64	15,500	20,300	21,500	14,500	19,600
	65+	22,400	30,700	32,600	22,800	29,900
Men	10+	56,300	69,300	74,700	45,900	61,800
	10-19	9,100	10,600	11,800	6,500	9,500
	20-24	6,100	4,600	5,900	2,800	3,800
	25-39	12,700	15,900	17,300	9,200	13,200
	40-54	10,900	14,300	14,500	9,600	11,600
	55-64	7,400	9,800	10,100	7,000	9,300
	65+	10,100	14,100	15,100	10,800	14,400
Women	10+	62,000	71,300	79,500	46,500	63,600
	10-19	10,300	10,600	11,600	5,900	9,300
	20-24	7,600	3,900	6,000	2,500	3,300
	25-39	12,300	14,800	17,700	8,500	12,800
	40-54	11,400	14,900	15,300	10,100	12,400
	55-64	8,100	10,500	11,400	7,500	10,300
	65+	12,300	16,600	17,500	12,000	15,500
Regions	Region 1	118,300	77,100	79,000	92,400	55,700
	Region 2	-	63,500	75,200	-	69,700
	Region 3	-	-	-	-	-
	Region 4	-	-	-	-	-
	Region 5	-	-	-	-	-

# POPULATION POTENTIALS



		Rotorua	Southland	Taranaki	Tauranga	Waikato
Min. Sample Size		800	800	800	800	800
People	10+	59,400	82,500	112,200	198,000	303,900
	10-19	9,800	12,200	17,200	27,500	48,500
	20-24	4,100	5,100	6,400	10,900	23,700
	25-39	14,200	18,100	23,700	43,700	77,600
	40-54	12,600	17,400	24,100	41,000	63,600
	55-64	8,000	12,200	16,600	27,400	37,800
	65+	10,700	17,500	24,200	47,500	52,700
Men	10+	29,200	41,000	55,900	97,100	150,000
	10-19	5,100	6,200	9,200	14,200	25,000
	20-24	2,200	2,800	3,500	6,200	12,400
	25-39	7,100	9,300	11,800	22,200	39,000
	40-54	6,100	8,600	11,900	19,900	31,200
	55-64	3,800	6,000	8,000	12,900	18,000
	65+	4,900	8,100	11,500	21,700	24,400
Women	10+	30,200	41,500	56,300	100,900	153,900
	10-19	4,700	6,000	8,000	13,300	23,500
	20-24	1,900	2,300	2,900	4,700	11,300
	25-39	7,100	8,800	11,900	21,500	38,600
	40-54	6,500	8,800	12,200	21,100	32,400
	55-64	4,200	6,200	8,600	14,500	19,800
	65+	5,800	9,400	12,700	25,800	28,300
Regions	Region 1	59,400	48,000	55,600	139,600	158,700
	Region 2	-	34,500	22,000	58,400	145,200
	Region 3	-	-	34,600	-	-
	Region 4	-	-	-	-	-
	Region 5	-	-	-	-	-

## Please note:

- The total 10+ population estimates are GfK's estimate based on the latest census data available from Statistics New Zealand.
- The minimum sample size represents the minimum number of diaries that will be used to generate the radio ratings results for each survey release
- The potential figures are GfK's estimates of the number of people, by age cell, for each survey area
- Each 10+ population and potential figure is estimated as at 27 February, 2024

GfK offers free training sessions to current radio ratings subscribers. Training is offered on an ad-hoc basis.

**Contact:** Johan Haupt 027 567 7333 [johan.haupt@gfk.com](mailto:johan.haupt@gfk.com)

## **GfK RADIO RATINGS CERTIFICATE TRAINING COURSE**

Gain an in-depth understanding on how the radio ratings are conducted and learn how to use the radio ratings data effectively.

### **Introduction to Radio Audience Measurement in New Zealand**

- comprehensive overview of how the radio ratings are collected.
- how the sample sizes are determined, selection of the respondents, how they are incentivised.
- detailed description of data collection, harmonisation, and how it is released.

### **Introduction to the Data**

- the basic statistics, how to interpret them, what relationship they have with each other, and how to use them effectively.
- understanding and interpreting Reach & Frequency.

**Duration:** 1 hour

## **BASIC GfK PROBE SOFTWARE TRAINING**

Hands-on training, providing an overview to GfK Probe and exploring

- software functions
- how to set up and read station ratings reports
- setting up campaigns and running reach and frequency analysis
- graphing and outputting results

Participants should have previously completed the Radio Ratings Certificate course.

**Duration:** 1 hour

## **ADVANCED RADIO RATINGS AND GfK PROBE SOFTWARE TRAINING**

The advanced training sessions provide hands-on experience, and can be tailored to participant needs. An example of what the advanced session can cover:

- Audience profiling
- Station loyalty
- Understanding and creating Ebb & Flow reports
- Creating dynamic targets
- Audience duplication
- Analysing your station's survey results

Participants should have previously completed the Radio Ratings Certificate course and Basic GfK Probe software training.

**Duration:** 1 hour

# 2024 LIFESTYLE CATEGORIES



The single source lifestyle questionnaire forms part of the GfK radio survey. The data it provides gives users an excellent insight into listeners' lifestyles and purchasing habits or intentions.

The 2024 categories are:

<b>Media</b>	<ul style="list-style-type: none"><li>- Music streaming</li><li>- Podcast listening</li><li>- Newspaper readership – paper and online</li><li>- Magazine readership</li><li>- Video on demand</li><li>- Cinema attendance</li><li>- Public Service Announcements</li></ul>
<b>Lifestyle and travel</b>	<ul style="list-style-type: none"><li>- Holiday travel intentions – domestic, overseas and cruises</li><li>- Sporting event attendance</li><li>- Bar / Pub and nightclub visitation</li><li>- Live performance / concert attendance</li><li>- Importance of personal health and fitness</li></ul>
<b>Household and home</b>	<ul style="list-style-type: none"><li>- Pet ownership</li><li>- Home renovations<ul style="list-style-type: none"><li>- Painting</li><li>- Landscaping/gardening</li><li>- Extensions/repair work</li><li>- Kitchen/bathroom renovations</li><li>- General household refurbishment</li><li>- None</li></ul></li><li>- Likely to purchase or sell residential property within next 12 months</li><li>- Spa / Swimming pool purchase intention</li></ul>
<b>Technology</b>	<ul style="list-style-type: none"><li>- Radio station social media usage</li><li>- Social media usage</li><li>- Internet surfing - time spent</li><li>- Computer tablet device purchase intention</li><li>- Computer video games and hardware/accessories, purchase intention</li></ul>



<b>Purchase behaviour</b>	<ul style="list-style-type: none"> <li>- Hardware store purchase</li> <li>- Garden nursery purchase</li> <li>- Furniture/appliance store purchase</li> <li>- Department store or discount retailer purchase</li> <li>- Bookstore/stationers purchase</li> <li>- Fashion/clothing store purchase</li> <li>- Pharmacy/chemist purchase</li> <li>- Purchased goods over the internet</li> <li>- Whitegoods, air-conditioning/heater/heat pumps, furniture purchase intention</li> <li>- Audio/visual equipment purchase intention</li> <li>- Motor vehicle purchase intention</li> </ul>
<b>Finance and insurance</b>	<ul style="list-style-type: none"> <li>- Home loans and intention to change</li> <li>- Vehicle insurance</li> <li>- Home and/or contents insurance</li> <li>- Health insurance</li> <li>- Life insurance</li> <li>- Kiwisaver</li> <li>- Superannuation</li> <li>- Finance and investment purchase intention</li> <li>- Insurance purchase intention</li> <li>- Savings and investments</li> </ul>
<b>Food and beverage</b>	<ul style="list-style-type: none"> <li>- Restaurant dining frequency</li> <li>- Hotel and licensed club visit</li> <li>- Take-away/fast-food purchases</li> <li>- Purchase of beer/wine/spirits/pre-mixed spirits for home or social occasions</li> <li>- Home delivery meal kits (e.g. My Food Bag)</li> </ul>

The most commonly referred to statistics are outlined in the tables below.

<b>Share %</b>	<p><b>Share of audience:</b> Indicates a station's relative strength within a market. It shows the percentage of total radio listening audience during a given time period tuning to a particular station. Share is a station's average audience expressed as a percentage of the total radio audience for the same period.</p> <p><i>For example, 8.4% of all radio listening is to Station G, Mon-Sun, 6:00am to midnight.</i></p>
<b>Average audience (000's)</b>	<p><b>Average audience or average quarter-hour audience:</b> the average number of listeners tuned to a radio station per quarter hour in any given time period. Usually expressed in thousands (000's).</p> <p><i>For example, in any given quarter hour between Mon-Fri 6:00am to 9am, on average 55,000 listeners were listening to Station F.</i></p>
<b>Cumulative audience/ cumes/ reach (000's or %)</b>	<p><b>Cumulative audience (cumes):</b> the total number of different people who listen to a station for at least eight minutes (in one quarter-hour) during any time period. Cumes illustrate audience size, as they estimate the unduplicated number of people reached by a station at least once during a particular time period.</p> <p><i>For example, Station K has 575,000 unique listeners between 6:00am and midnight, Mon- Fri.</i></p> <p>Note that the cumes from two stations cannot be added together, nor can you add daypart cumes together, because listeners may be listening in both sessions and duplication will occur. Station cumes may be added across discrete demographics within a time period, e.g., cume Men 18-24 + cume Men 25-34 = cume Men 18-34</p> <p>Cumulative audience can also be expressed as a percentage of total audience or in thousands (000's).</p> <p><i>For example, Station K has 575,000 unique listeners aged 10+ between 6:00am and 12mn Monday- Friday. 54% of all people 10+ tuned in to Station K at least once during this time period.</i></p>
<b>Time Spent Listening (TSL) hrs:mins</b>	<p><b>Time Spent Listening or TSL:</b> an estimate of the amount of time a station's cumulative audience spends listening during a specified time period, expressed in hours and minutes. Note that TSL does not denote audience size.</p> <p><i>For example, between 6:00am and midnight, Mon-Fri, Station C listeners tune in for 8 hours and 15 minutes (8:15).</i></p>
<b>Exclusive audience (000's/%)</b>	<p><b>Exclusive audience:</b> is the number of people who listen exclusively to one station during any particular session. This can be expressed as a number or a proportion of the station's total audience.</p> <p><i>For example, 90,000 people listened only to Station R 6:00-12mn Mon-Fri or 35% of Station R's audience only listen to Station R during this time period.</i></p>

Below are statistics that are more commonly found when using reach and frequency analyses:

<p><b>Average frequency (effective and exclusive)</b></p>	<p><b>Average frequency:</b> this is the average number of times that a station's listeners may hear an advertisement. Also known as opportunity to hear.</p> <p><i>For example, Station A's audience were exposed to an advertising campaign on average 3.1 times.</i></p> <p>Frequency can either be:</p> <ul style="list-style-type: none"> <li>• <b>Effective:</b> displays the number of times the audience has heard the advertising campaign at least once, at least twice etc. Displayed as 1+, 2+, 3+ etc.</li> <li>• <b>Exclusive:</b> displays the number of times the audience has heard the advertising campaign exactly once, exactly twice, exactly three times. Displayed as 1, 2, 3 etc.</li> </ul>
<p><b>Reach / Cume</b></p>	<p><b>Reach:</b> expresses the total number of different people who may be reached at least once by an advertising schedule, displayed as numbers of people and/or as a percentage of the population group being targeted. Reach is similar to cumulative audience but is usually quoted in the context of an advertising campaign.</p> <p><i>For example, 15 x 30 second commercials placed in Breakfast by Brand A, Mon-Fri, for one week on Station X will reach 312,000 people 25-54, or 30% of all 25-54 year olds.</i></p>
<p><b>Gross impacts</b></p>	<p><b>Gross impacts:</b> Shows the total number of times the advertisement was may have been heard; it measures the weight of a campaign. Each quarter-hour audience figure is added together to create gross impacts, it is a duplicated figure as the listener is likely to hear the spot more than once.</p> <p><i>For example, Station X plays a spot at 6.05 a.m., 7.05 a.m., 10.05 a.m., 1.05 p.m. and 4.05 p.m. If each spot attracts an average audience of 10,000 then the Gross Impacts would be 50,000.</i></p>
<p><b>Cost per thousand or CPM</b></p>	<p><b>Cost per thousand:</b> this is the cost of an advertising campaign or spot, based on the number of times an audience is reached (gross impacts) i.e. how much it costs to achieve 1000 impacts. It does <u>not</u> measure how much it costs to reach 1000 different individuals.</p> <p>CPM is calculated by dividing the cost by the number of gross impacts.</p> <p><i>For example, a five-spot advertising campaign run on Station X is estimated to achieve 853,000 gross impacts. Each spot cost \$500.</i></p> <p><math>CPM = 250/853 = \\$2.90</math></p>

# ACCESSING AND SOURCING THE RADIO RATINGS



Radio Ratings data will be provided by GfK to subscribers under the following conditions:

- Only information generated within GfK Probe or other authorised software is able to be published. It is not to be released or published outside the station or network office to whom it is released.
- The information obtained is only able to be released or published in any form (on-line, facsimile, advertisement, verbal or otherwise) with the consent of GfK.

A particular warning applies with low sample sizes. The minimum “non-tagged” sample size via Radio Insights is 80, with anything below this figure to be tagged with a low sample size warning. This tagging rule shall apply to all published survey data using low sample size audience groups.

The numbers shown under ‘others’ in any market cannot be published as a whole in the public domain or quoted in any way as to infer the performance of a non-subscriber/listed station. The ‘Others’ group that is reported within the GfK Radio Ratings is composed of all other listening collected within a market, it is all listening to other stations not listed in the official survey result within that market. It is important to note that no individual station's performance is identifiable within this group and as such it is not possible or correct to attribute any trend or result to any individual station.

Any data used in promotional material must be referenced to GfK. The correct format for this referencing is as follows:

GfK Commercial Radio Survey number and year  
Market  
Statistic and qualifier (e.g. % or 000's)  
Daypart  
Audience Grouping (Demographic)

Abbreviations for statistics, dayparts and demographics can be used, as long as it is clear what they refer to (e.g. Cume for Cumulative Audience, M-F for Monday-Friday, M25-54 for Males 25-54).

For Example:

*GfK Commercial RAM, S1/24, Market, Cume %, AP10+, M-F, 6am-10am*

The radio ratings survey is conducted using a multi-mode methodology, with 70% door-knock recruitment for the paper diary and 30% online recruitment for the e-diary.

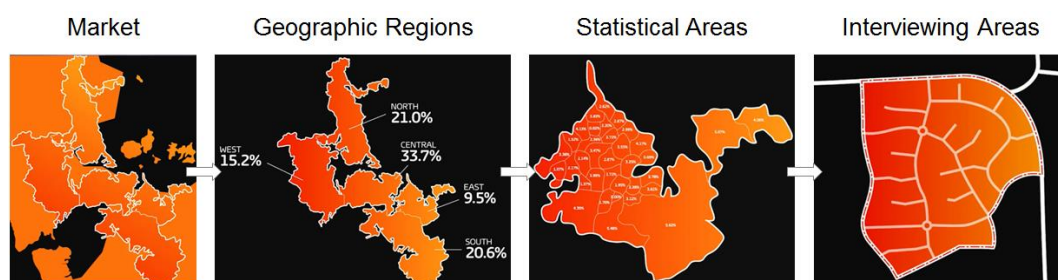
## The sample design and size

### Sample design:

### Paper diary

The paper diary sample is selected using a stratified multistage probability sample, where respondents aged 10 years and over are recruited via household flooding methodology.

Markets are defined by Geographic Regions as determined by The Radio Broadcasters Association. Each market is split into regions which are then further divided into statistical areas (SAs). Census data from Statistics New Zealand is used to calculate the quota of respondents required in each SA to ensure the final sample reflects the total population. Each SA is then split into interviewing areas (IAs), with a detailed map drawn of each IA. Each block within an IA is prescribed a block number. The blocks are numbered using a process called the serpentine curve, and to maintain randomness, each map is assigned a different start block, with each block then worked in order. In order to reach the required sample size, a minimum of 10 diaries per IA are recruited.



Sampling is sequential over time, with up to three calls being made on each selected household, spaced across several survey periods. Interviewers rotate their calls over different times of the day to give full opportunity for all types of households to participate.

### In 2024 the surveys will comprise:

**Metropolitan Markets:** for each survey wave, one-twelfth of the IAs are surveyed each week (twelve-week wave); this ensures an even spread across the survey wave. Data from two consecutive waves are combined to produce the survey reports, with 3 releases per year.

**Regional Markets:** for each survey wave, one-twelfth of the IAs are surveyed in each week, ensuring an even spread across the survey wave. Data from four consecutive waves are combined to produce the survey reports, with 3 releases per year.

**Total New Zealand and Major Markets:** Survey reports are produced using data from 2 waves combined from Auckland, Wellington and Christchurch and the 10 regional markets, with 3 releases per year.

A prize draw incentive of \$1000 per wave is offered for respondents who complete and return a valid radio listening diary.

## Sample design: e-diary

Recruitment of respondents to complete the e-diary is undertaken using online research panels. E-diary respondents make up 30% of the radio ratings sample. Using this method of recruitment allows the pre-screening and selection of respondents to reflect the spread of the population by age and gender and by geographic region within each market, in line with Statistics New Zealand figures.

Each respondent is incentivised to participate using the online panel provider's incentive scheme.

## Sample size: paper and e-diary combined

Minimum effective target samples for each survey report are:

- |                 |  |
|-----------------|--|
| • AUCKLAND      | 2,400 individuals aged 10 years and over.  |
| • WELLINGTON    | 1,500 individuals aged 10 years and over.  |
| • CHRISTCHURCH  | 1,500 individuals aged 10 years and over.  |
| • DUNEDIN       | 800 individuals aged 10 years and over.    |
| • HAWKES BAY    | 800 individuals aged 10 years and over.    |
| • MANAWATU      | 800 individuals aged 10 years and over.    |
| • NELSON        | 800 individuals aged 10 years and over.    |
| • NORTHLAND     | 800 individuals aged 10 years and over.    |
| • ROTORUA       | 800 individuals aged 10 years and over.    |
| • SOUTHLAND     | 800 individuals aged 10 years and over.    |
| • TARANAKI      | 800 individuals aged 10 years and over.    |
| • TAURANGA      | 800 individuals aged 10 years and over.    |
| • WAIKATO       | 800 individuals aged 10 years and over.    |
| • MAJOR MARKETS | 13,400 individuals aged 10 years and over. |
| • TOTAL NZ      | 14,200 individuals aged 10 years and over. |





## Paper diary placement: face-to-face

Diary placement is made via face-to-face by specially selected and trained interviewers who are managed by Field Supervisors. The remaining 30% of the sample is recruited online for the e-diary.

Household flooding methodology is used requiring diaries to be placed with all people living in the household aged 10 years and over. The interviewer recruits the household through a person living in the household aged 18 years or over and all household recruitment information is recorded electronically via a tablet PC (CAPI).

Each diary owner's name and an identifying person number is recorded on the front cover of their diary, as well as the dates for listening and date the diary will be collected. The interviewer conducts the demonstration with the person at the door and, where possible, the other members of the household. They also explain privacy considerations, the lifestyle questionnaire, and inform respondents that they will be entered in a draw to win a prize for completing the survey.

All calls to establish contact are made on Thursday, Friday, and Saturday, with the time rotated between day, night, and Saturday, according to an established procedure. Each interviewer works through a list of areas in a different order to the previous wave, to ensure the timing of calls at any home alters from wave-to-wave, increasing the contact rate.

If a household declines to participate (e.g., busy/going out) but does not refuse outright, a leaflet is left explaining the purpose of the survey and to reassure the potential respondents that the project is legitimate and worthwhile. These households are contacted again in subsequent waves to attempt to obtain their participation. The leaflets can also be left at unattended homes so that when the interviewer calls back in a future wave the household members are better prepared for recruitment.

## Mid-week calls to respondents

A telephone call is made to the respondent/household on Tuesday or Wednesday during the week of diary completion. The purpose of the mid-week call is to remind the respondent to participate in the survey, enquire whether they require clarification of what they are to do, and to confirm the diary collection day and time.

The mid-week call also offers the opportunity for quality control checks to be made, with respondents asked a series of validation questions about themselves, their household and the interviewer's recruitment process.

# HOW THE RATINGS ARE COLLECTED



<b>Sunday collection</b>	<p>A telephone call is made on Saturday evening to confirm an approximate time for diary collection and to check that the diary has been completed fully, including the lifestyle questionnaire.</p> <p>On Sunday at the end of each survey week, the interviewer conducts up to two personal collection visits to the household in an effort to collect and clarify the diary in person. If no-one is at home on the second visit, the interviewer will leave a pre-paid envelope and a thank you card asking for the diaries to be returned by post.</p>
<b>Paper Diary Data Collation</b>	<p>Once completed diaries are returned to GfK, they are subject to result coding by experienced staff members, independent of field interviewers. A diary may be given one of three codes: usable, nil listening, or unusable.</p> <p>In-office coding procedures aim to check the consistency of diary records and the coding department will follow up with respondents to clarify information where necessary.</p>

## The e-diary

### E-diary design

The GfK e-diary is designed to replicate the content of the GfK paper diary, with the exception that all stations that are printed on the stickers for the paper diary are pre-listed in the station drop down list for the e-diary and include an option to select “Other”.

The e-diary collects quarter-hour listening data from the respondent for a seven-day period, commencing on a Sunday and finishing on a Saturday.

Respondents can access their e-diary from anywhere using their unique diary login and password. The e-diary can be completed from home using a personal computer or tablet, or on the move using GfK’s mobile diary (m-diary) which can be accessed via any mobile internet browser (e.g., smartphone). Information entered via either the e-diary or m-diary is synchronised so that a respondent who enters listening via their m-diary will see that listening reflected in the e-diary entries.



The e-diary prompts the respondent to enter their listening at a quarter-hour level when they have listened to a station for eight minutes or more. Once the respondent selects a station and quarter-hours of listening, the e-diary then prompts the respondent to complete the place of listening and the device on which they listened.

Once the respondent completes their e-diary, they are asked to complete the lifestyle questionnaire, before finally submitting their diary.

All e-diary data is verified by inbuilt logic checks to ensure that respondents enter all requested information, eliminating the need for further data entry and coding.

## Producing the Radio Ratings

### Data harmonisation

Data from the GfK paper diaries and e-diaries are combined or harmonised via GfK's internal processing systems. Data is processed as a combined file and splits via diary collection method are not released.

### Weighting the sample to create the ratings

The data is weighted to adjust for differences between the achieved survey sample and the population profile of the market being surveyed.

Sample weights are calculated using a rim-weighting methodology, with age, sex and region population benchmarks (as determined by Statistics New Zealand figures), and used to produce estimates for the population aged ten or more in each market.

The weight associated with a respondent is effectively the number of people in the population that person represents. These weights adjust for differences in probabilities of selection and also calibrate the estimates to population benchmarks.

### Error-free data

While every effort is made to ensure the data and reports are accurate and complete, each report is issued subject to any errors and omissions. GfK will take all immediate steps to rectify any inaccuracy or omission.

The Radio Broadcasters Association (RBA) represents the commercial radio industry of New Zealand in matters of a non-competitive nature affecting the industry.

The RBA membership comprises the two Major Networks, NZME and MediaWorks, plus the majority of independent operators.

The RBA represents the commercial industry to its many partners and stakeholders within government, business and the community.

It deals with issues ranging from self-regulation, ownership rules, programming, election programming and advertising issues including liquor, obesity, financial and environmental, copyright and various broadcasting codes.

It oversees industry research matters and runs the New Zealand Radio Awards.

For more information on RBA please visit <http://www.rba.co.nz/>



## The Radio Bureau

The Radio Bureau is unique in that it represents all of the country's radio stations, offering clear, unbiased, professional advice to advertising agencies on the best use of radio.

TRB's planning team use in depth market analysis to deliver optimal results to advertisers. TRB manages the entire process - from brief through to post analysis - ensuring agencies are able to navigate radio as smoothly as possible.

For more information on TRB please visit: <http://www.trb.co.nz/>

